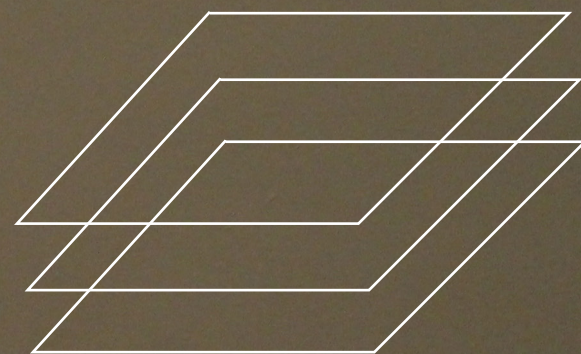




“I work on drawing as a final product. It is my entire visual art practice: I eat, sleep, think, write about, and do drawing.”

Deanna Petherbridge



14. CHANGING URBAN ENVIRONMENTS

AGENDA

Deane Petherbridge has pioneered critical thinking on drawing and its place in art and architecture since the 1960's. Using architectural representations as social and political metaphors, her immense attention to detail acts to commemorate all the imaginary people and their activities, resonating the desolation and futility of war. Working alongside her poignant exhibition in the Whitworth Gallery, this event will challenge students to respond to her work, developing an intervention which will be exhibited within the gallery.

COLLABORATORS

During this event students will collaborate with the Whitworth, a renowned contemporary art gallery that actively promotes research and academic collaboration. Their role in this project will be to provide information regarding the potential locations for the intervention and also aid in the curatory process.

PRODUCTION

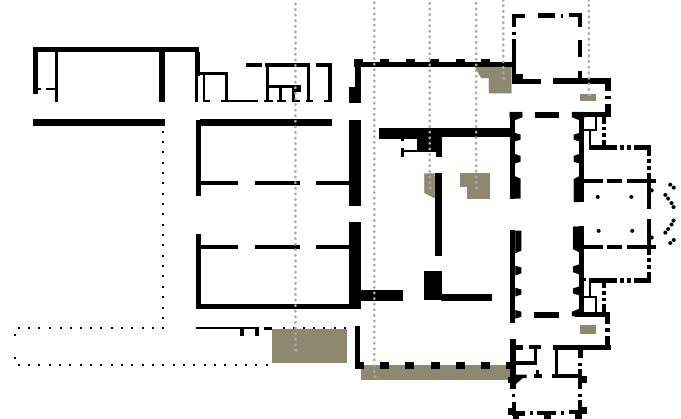
As their final output for the project the students will be prepare an installation that will be exhibited within the Whitworth Art Gallery.

MASTERCRAFT

Drawing inspiration from Deanna Petherbridge's work, this event seeks to interpret the urban fabric through a variety of means. Students will take part in a drawing masterclass, where a variety of sketching techniques are explored, and also have a go at producing dioramas.

The following are the key skills that will be developed during the event:

- Drawing
- Model making
- Exhibition Design



Plan of the Whitworth indicating potential locations for the installation

Group 14 (USE): Jenny Bedford // Joe Smithard // Kathleen Lucas // Emma Lindblom

In line with our Atelier ethos we are interested in exploring the intersection between art and architecture and the potential to use a variety of expressive means to communicate ideas.

the **Whitworth**

MANCHESTER
1824

The University of Manchester
The Whitworth