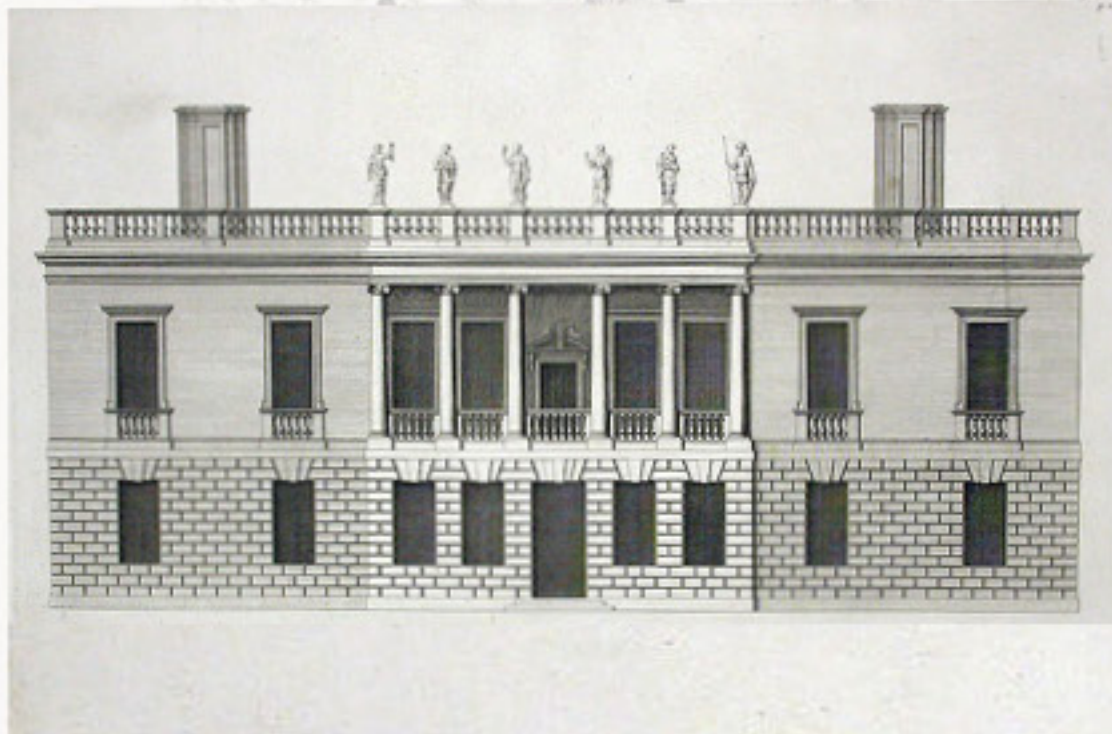


We Craft This City

A re-imagination of physical form
from sketches, drawings and photographs into a series of models
to contribute to the collection of Manchester Society of Architects



(Queens House, Greenwich, London, 1635; Inigo Jones)



(Model by Timothy Richards)

We wish to examine great examples of lost, demolished and unbuilt architecture through the process of model making. Students will research, interpret architectural drawings, and experiment with materials and ideas in modelmaking.

This is done in relation to the current exhibition 'We Built This City: Manchester Architects at 150' at the Sir Kenneth Green Library. Celebrating generations of innovation, the context of the event complements the ethos of our atelier, Continuity in Architecture, by learning from history and designing with respect to the existing.

In collaboration with:

B.15
MODELMAKING
WORKSHOP



**Manchester
Architects**
Manchester Society of Architects



The Sir Kenneth
Green Library

Continuity in Architecture | Polys Christofi | Jenny Etheridge | Dalia Juskaite | Samuel Stone | Joey Wong

(Manchester Town Hall Clock Tower, c.1874; Sketch by Alfred Waterhouse)