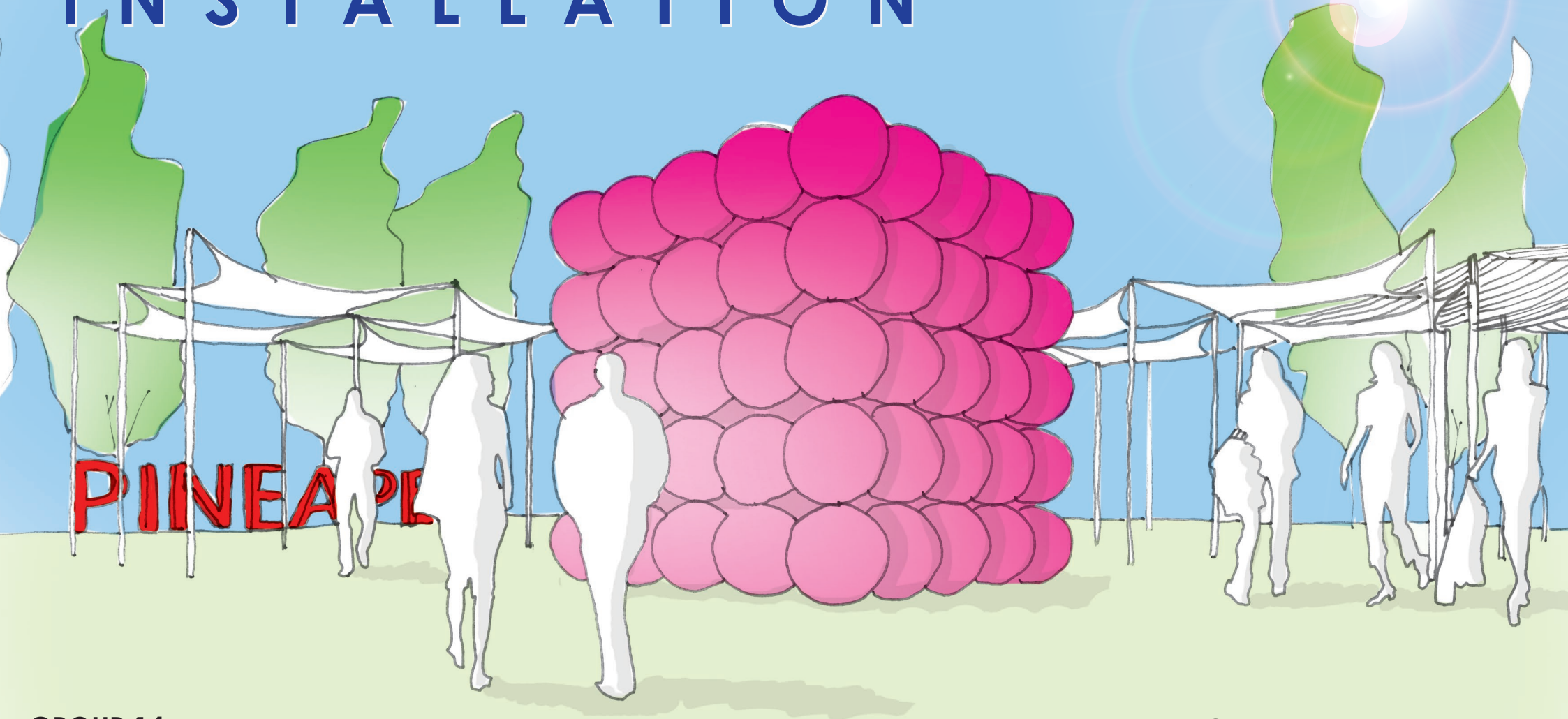


FESTIVAL: INSTALLATION



GROUP 14:

Kieran Thompson - CPU
Andrew Chung - USE
Fraser Streatfield - qed
Russell Pollard - CPU
Georgia Thomas - qed

PRODUCTION:

To begin the programme, the finalised design of the installation will be presented and explained to BA1&2, highlighting the planned methods of manufacture and assembly.

BRIEF:

- The piece should light up
- Move in some way through kinesis or light
- The piece should be safe for all ages to look at. If they cannot touch it then the fencing should be considered and be part of the design

DECORDIA

Collaborator:

Decordia Events

You can find more at:

<https://www.decordiaevents.com/gallery>

FESTIVAL CONFIRMED

(Confidential!)

AGENDA:

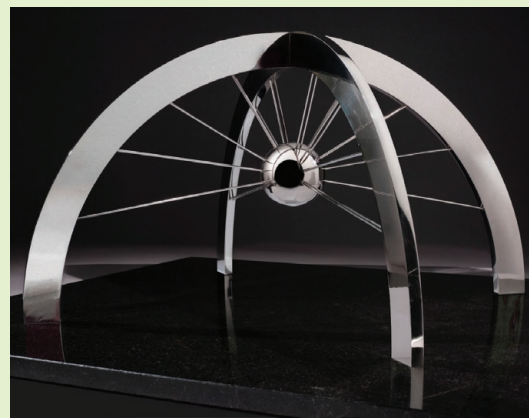
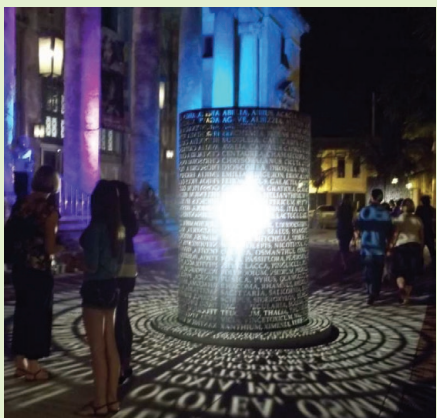
To design, manufacture and assemble a major centre-piece installation to be used in a Manchester festival during the summer of 2018 and beyond!

CRAFT:

- Scaled prototype model
- Manufacturing Drawings
- 1:1 installation assembly
- Hands-on decoration
- Construction as a team
- Working within a budget

Application postcards submitted by BA1&2 may be incorporated into the final design.

PREVIOUS DECORDIA FESTIVAL INSTALLATIONS:



ALTERNATIVE INSTALLATION PRECEDENTS:

