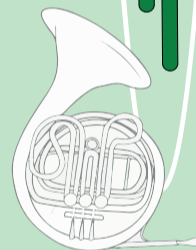
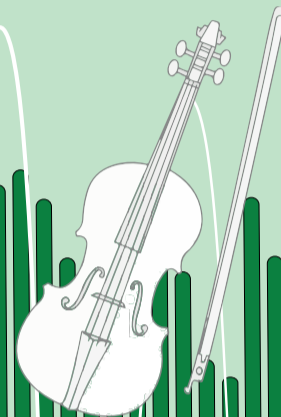
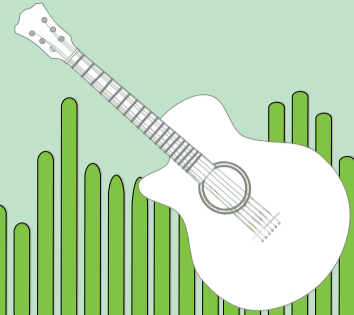


GORSE HILL STUDIO 20 YEARS ON



- COORDINATORS -

Kam Ian Jessica Chan [Platform]
Anson Ho[USE]
Alice Weng Sam lu [LULU]
Yingying Zhou [CPU]
Runzi Zhu [USE]

We are interested in how architecture can improve the quality of life for the social minority.

- CRAFT -

Drawings
Modelling
Digital Techniques
Communicating

- AGENDA -

Being as a new charity, Gorse Hill Studio struggles of funding for new developments. To provide support of redevelopment, we have chosen to re-design one of the main communicative spaces - the recording studio. To initiate the design, we have collaborated with University of Salford to visit the professional sound lab and undertake an experience tour in MediaCity. Acoustic director from BDP would assist with design developments from students. We hope these design proposals would be beneficial to the Gorse Hill Studio.

- COLLABORATOR -

Gorse Hill Studios - an independently run charity offers creative, social and personal development opportunities. It has an array of workshops including music, dance, drama, visual arts and digital arts which mostly targets at young people with additional needs and those struggling with mainstream education.

The University of Salford Sound Lab - a built facility at the heart of MediaCityUK in most modern professional specifications and is available for students, researchers and commercial clients.

BDP - a major international practice of architects, designers, engineers and urbanists.

- PRODUCTION -

A presentation to showcase recording studio designs of MSA students to GHS staffs and representatives. Design ideas will be represented through a variety of mediums i.e. posters, models, sketches, 3D representation, etc.

MANCHESTER SCHOOL
OF ARCHITECTURE

GORSE HILL STUDIOS



BDP.