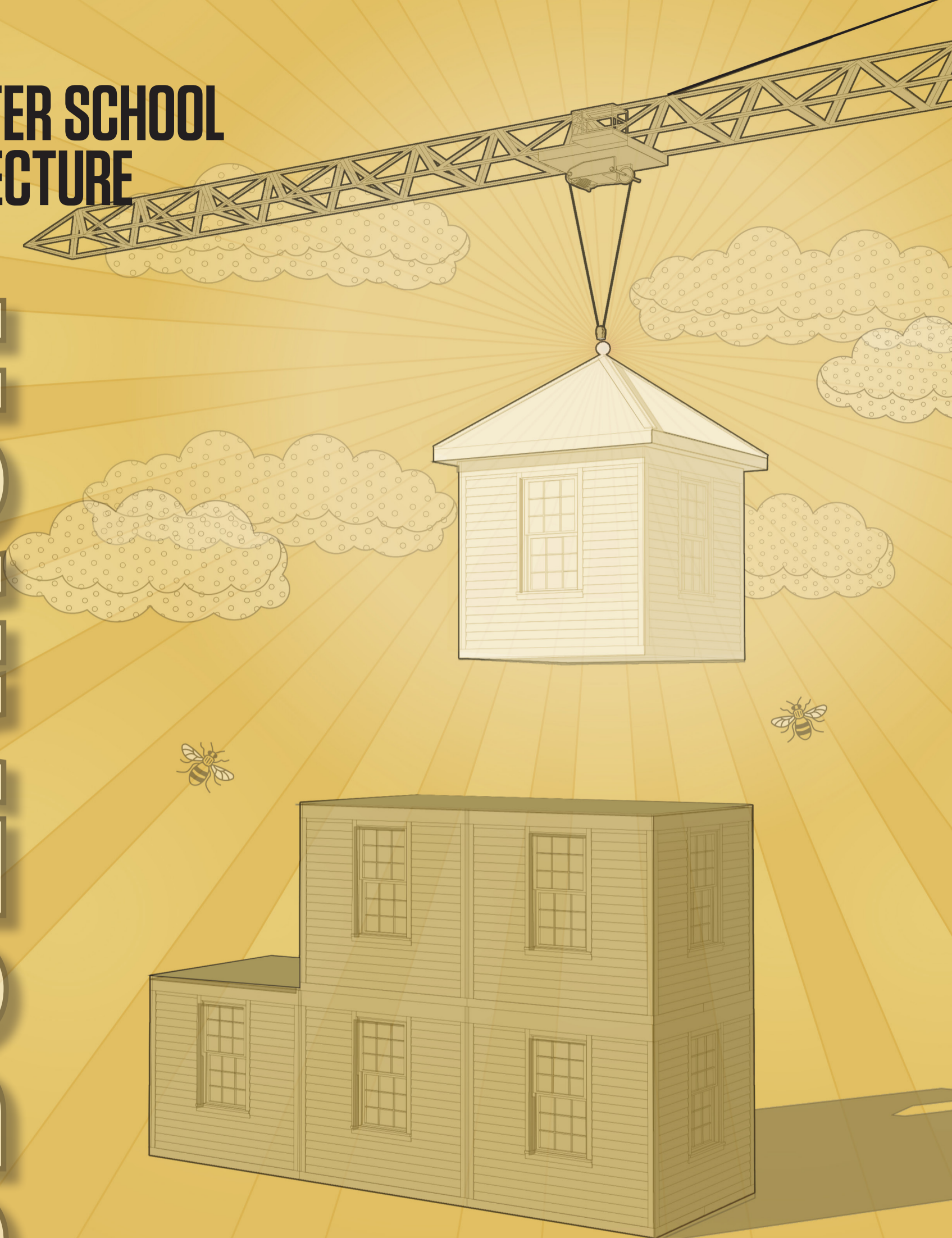


# MODULARARCH



## AGENDA

"modularArch" will be developing a series of modular housing options in collaboration with Manchester City Council.

In collaboration with key regulatory bodies (Building Control and Planning), the project aims to explore adaptable options for a range of sites across the city within budgetary requirements.

We will be considering materiality options and environmental strategies along with the lifecycle costs of the modular units. Utilising Modern Methods of Construction (MMC), this project aims to develop energy efficient affordable housing ranging from 2-bed flats to 3+ bed dwellings.

## SKILLS

As well as engaging through public consultation and with construction professionals, this design project will develop skills in physical and digital modelling, InDesign, Photoshop and key rendering programs to produce high-quality photorealistic imagery.

## TEAM

Thomas Oldham  
Harry Chan  
Tasawar Rahim

Jamie Talbot  
Jemma Baldwin  
Christian Brown

Visit [msa.ac.uk](http://msa.ac.uk) for more information