

# MANCHESTER SCHOOL OF ARCHITECTURE

## LiveWires

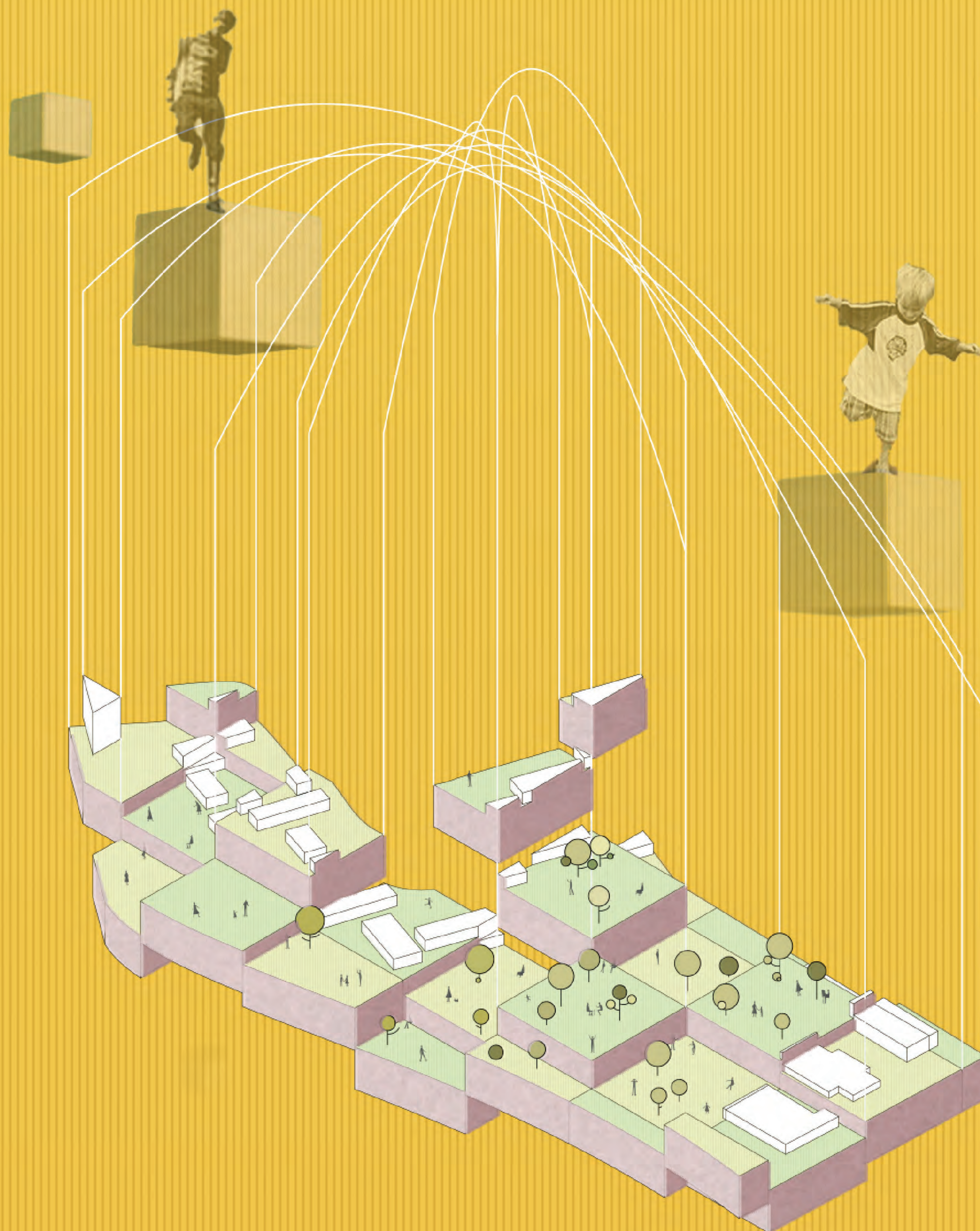
### Agenda:

LiveWires will design an outdoor community food hub and activities centre for residents of Moss Side and Hulme to provide Covid safe interactions, where people can come together as a community to cook, grow and learn about food.

Through Social Media we will create a community forum where members of the community can work together with us and The Work House Project.

### Skills:

Community mapping, concept design, and modularization. To use various software, including but not limited to sketchUp, Photoshop, and InDesign. To co-create a 'howto build' document. (and enthusiasm to learn how to cook.)



### Team members:

Jemima Eyre  
Jian Gao  
Joseph Twitchen  
Pardis Naji  
Rayyan Amjad  
Soniamaria Losapio

### Collaborator:

The Workhouse Project  
(lead, project management) - Moss Side Health Centre  
(development of gardens, practical project support, community links, patient referral)

Visit [msa.ac.uk](http://msa.ac.uk) for more information