

MANCHESTER SCHOOL  
OF ARCHITECTURE

WHITWORTH GALLERY

HOUSE OF NEGOTIATION

Visit [msa.ac.uk](http://msa.ac.uk) for more information

MANCHESTER  
1824  
The University of Manchester

Manchester  
Metropolitan  
University

the Whitworth

MSA  
LIVE 21

## Team

**Jessica Bell** (M Arch 01)

**Weining Luo** (M Arch 01)

**Michelle C Majalang** (M Arch 01)

**Thomas Roylance** (M Arch 01)

**Yasamin Salimi** (M Arch 01)

**Hanxiao Zhao** (M Arch 01)

**Weng Chon Cheong** (BA 01)

**Eyob Mekonnen** (BA 01)

**Deekshita Viju Nair** (BA 01)

**Maria Andreea Pena** (BA 01)

**Jakub Rammel** (BA 01)

**Mathilde Stone** (BA 01)

**Pak Hei Lee** (BA 02)

**Andreea Rusu** (BA 02)

**Darya Williams** (BA 02)

## Partners

This project was run in collaboration with The Whitworth Art Gallery, focusing on a site in Whitworth Park which is part of the developing community garden. Meetings were held in the planning stages of MSA Live with Whitworth staff including Alistair Hudson, Director at the Whitworth and Manchester Art Gallery; Patrick Osborn, Landscape and Sustainability Technician; Francine Hayfron, Cultural Park Keeper; Olga Gribben, Development and Stakeholder Management and Ed Watts, Head of Civic Management. The Whitworth team then returned at the end of MSA Live to view and give feedback on a presentation by the MSA student team on the work that had been completed.

The outputs created in MSA Live will inform the decisions made on how a park keeper's house could be constructed and run in Whitworth Park. The partners will use our visuals and ideas to strengthen future funding applications for the project.

In addition to the Whitworth Team, talks were organised from experts in relevant fields for this project. Peter Wilson from Timber Design Initiatives gave valuable insight into possibilities for the practical timber construction of the House of Negotiation, referring to his involvement in the 1000 huts project in Scotland. Furthermore Dominic Sagar shared his work from the Workhouse Project, a scheme in the Moss Side and Hulme areas aiming to tackle homelessness.

# Agenda

## House of Negotiation

This project involved the design of a new park keeper's house in Whitworth Park. The 'House of Negotiation' will be a practical and constructible living space for two people at a specified site in Whitworth Park.

It will negotiate a pact between the city and its residents by demonstrating new possibilities for social housing, through the occupation of its residents giving back to the local community. It will be constructed with timber and other sustainable, locally sourced and renewable materials. In addition to this, the project presents challenges with services and location with it being in a predominantly public area meaning the right level of privacy must be attained for the residents living there.

The scheme aspires to address the housing issue within Manchester with these proposals acting as a prototype for private housing with the residents hosting it as a living programme to change future perspectives on housing.

In the second week of MSA Live, students worked in three groups to come up with different house ideas: Soup Kitchen, a scheme based around accommodating the homeless and providing garden grown meals; Creatives, aimed at musicians and artists; and Disability Campaigners, a scheme focused on inclusivity and accessibility for all. Each group studied in depth who could occupy this house and how they could be accommodated. After conceptual sketching, storyboarding, model making and design development, the students created final visuals and plans for each house proposal. The outputs for this project will provide The Whitworth with ideas for how the park keeper's house could look, function and be constructed, with an aim to help to secure funding for its construction.

# Whitworth Park

## Introduction to Site

Whitworth Park is named after Sir Joseph Whitworth. Publicised as “a woodland park and pleasure ground”, The Park was very popular and attracted large numbers of people and work continued to add to its attraction. Many added facilities such as The Lake, The Lake Pavilion, The BandStand among many others which went through a number of changes in response to the economic situation at the time.

By 1931 annual visitor numbers, which had reached 176,865 in 1917, declined, and income was not meeting cost. Loss of amenity, including a new playground, were vandalised and abandoned and the Park deteriorated rapidly, gaining a negative reputation.

It was agreed that a redefinition of the Park, with renewed fences and gates was the first step to be followed by proposals by Friends of Whitworth Park for a longer term strategy to the repair and renewal of the Park’s infrastructure. This led to the Friends working with the Park Manager to produce the first comprehensive Management Plan for the Park 2011-16, which was finally produced in 2010. Since that early co-operation, money arising from nearby developments, has enabled good progress to be made so that the main infrastructure will have been repaired and furnished and new attractions added.

Through the work of Friends of Whitworth, together with a much better grounds maintenance regime, transformed the public perception of the Park and local workers, students and residents are now comfortable about spending leisure time there, enjoying the green space and the trees. The new Whitworth Art Gallery building has a greatly extended public area but is designed to use proportionately much less energy and this environmentally sensitive approach extends throughout the revived building, including to its new roofs which are sustainably planted to encourage wildlife. Initiatives funded to “rethink parks” are ongoing. The Friends are therefore working with the Whitworth to meet the objectives of the Plan in ways which are compatible with the council’s new ways of working and which will ensure the Parks development into the future. The Whitworth Art Gallery is currently proposing a community garden project with a Park Keeper’s House.

The site for the Park Keeper’s House is on the community garden proposal behind Whitworth Art Gallery. It faces Denmark Road and is located in the quieter areas of Whitworth Park. Designing a Park Keeper’s house in this location creates the opportunity to attract visitors and liven up the area.

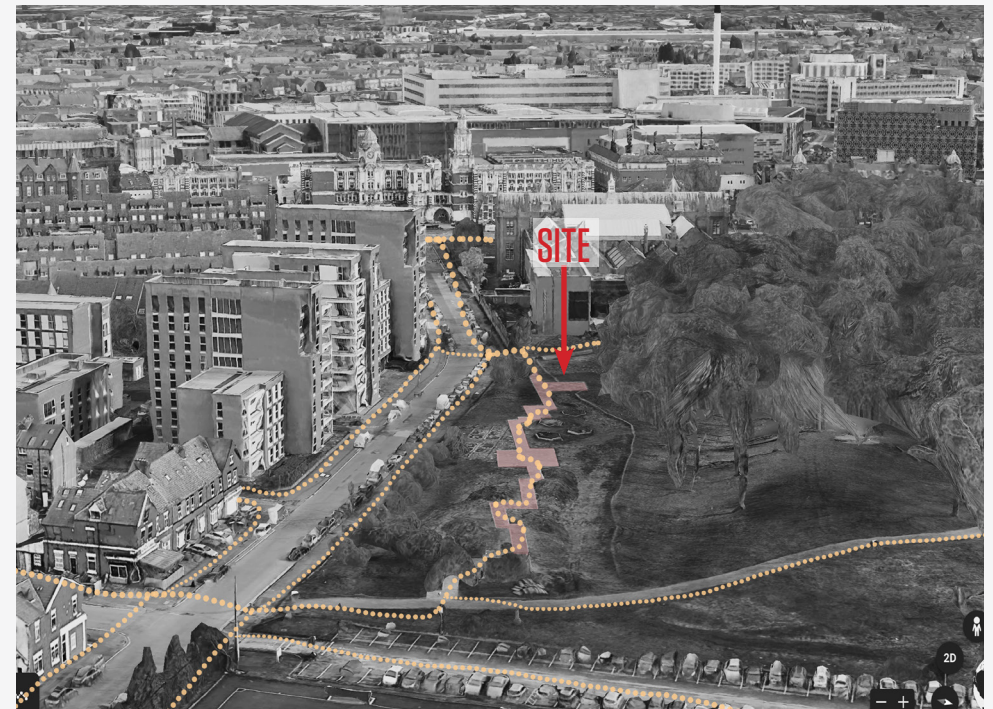


Image Top:  
Main Pedestrian Routes

Image Middle (Left):  
Photo looking towards the  
events area.

Image Bottom (Left):  
Photo looking North of  
the Site

Image Bottom-Right:  
Circulation and Cycle  
Routes



INITIALCONCEPTUAL MODELS

# Proposal 1 Soup Kitchen

With the brief given, this Soup Kitchen proposal took the opportunity to design a house for someone who really needs it as well as benefitting from its location. The idea that the house could be inhabited by two formerly homeless people who run a soup kitchen was inspired by the community gardens. This would provide free meals to the homeless, with the options of park visitors paying for a meal as well.

The idea was to provide a communal eating space and for the ground floor, the public area, to be open and welcoming whilst the private area, on the first floor, to be a relaxing and simplistic space. The design incorporates timber slats and shutters which can be opened or closed to open the space up to the outside in the summer, for outdoor eating. These slats help to incorporate the outside landscape of the park into the building.

## Day in the Life of a Homeless Man in Manchester



Wakeup, usually very early due to all the noise and light on the street such as 5:30am.



They must then find a place in which to wash up, typically open toilets or anywhere they're allowed.



A large part of their day is spent at various daycares where there is food shelter but not much to do. Most will read newspapers or look for jobs.



In the afternoon, many will go to the park and sit outside, some begging and others not.



Soup kitchens and other charitable organisations hand out food, usually around 9pm.



Once they have eaten and socialised, they will find a safe space to sit before returning to their sleeping spot for the night.



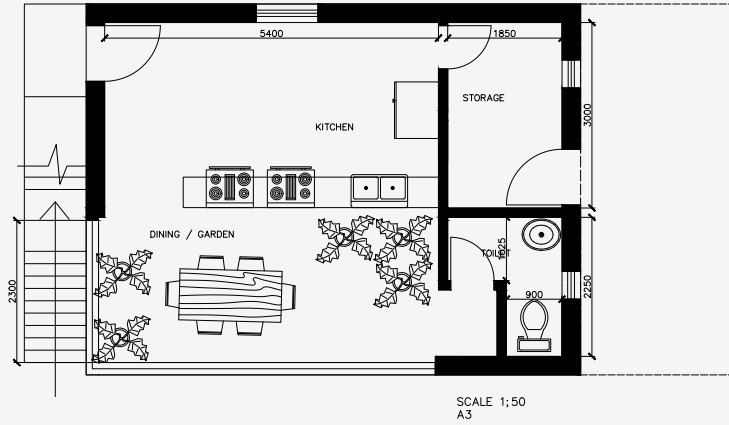
Paul (Left), 55, Manchester,

Following the collapse of his business during Covid-19, Paul was forced to live on the streets as he could no longer afford his rent. The Soup Kitchen House enables him to get off the street and find a purpose again.

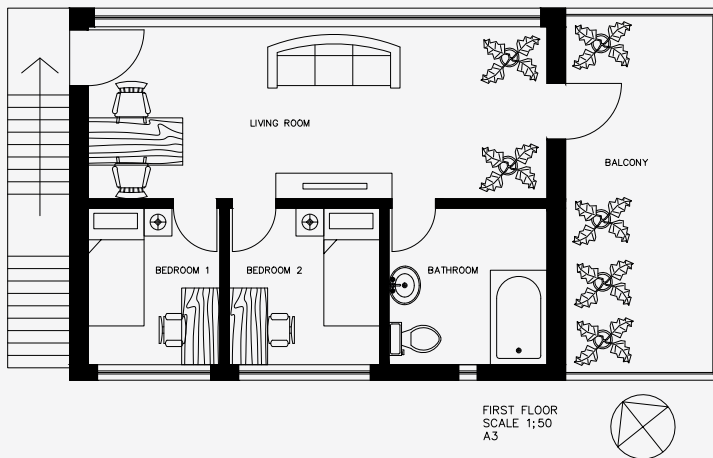
Alex (Right), 42, Israel,

A refugee who came to the UK seeking political asylum but struggled to gain social care and benefits to secure his future in Manchester so had to live on the streets. The job at the Soup Kitchen brings Alex closer to the rest of the community and is a great outlet for Alex.

GROUND FLOOR PLAN  
Communal Kitchen, Dining  
and Open Garden Area



FIRST FLOOR PLAN  
Private Living, Bed and  
Bathroom Areas



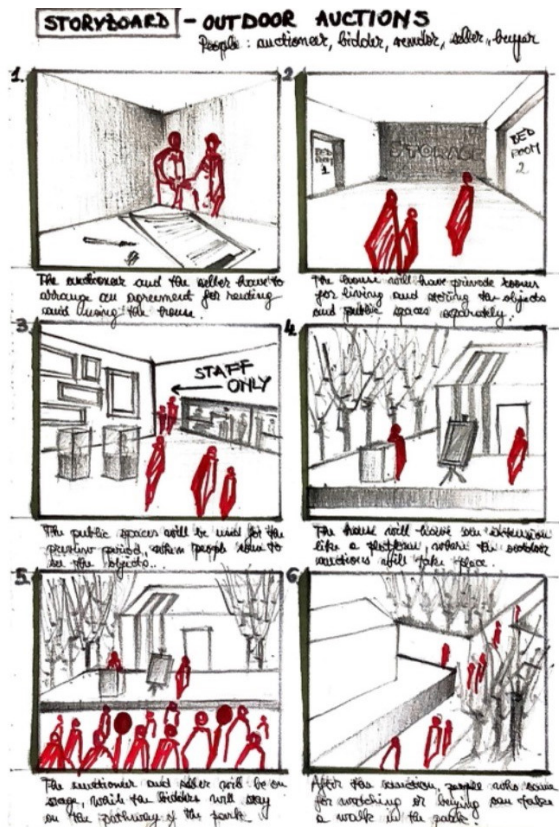
# Proposal 2

## Creatives

The Creatives house was designed for an artist or musician who needs temporary accommodation and is collaborating with the Whitworth Gallery.

Through this design, there is an attempt to achieve a balance between the public and private, achieved through the design's programme. While allowing a space for the artist or musician to exhibit or perform to visitors of the park, a semi-public studio/practice space is provided on the ground floor, with an even more private balcony on the first floor.

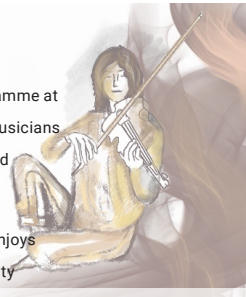
A key driver for this design was to ensure the occupants' collaboration with the park and its natural surroundings. This is achieved through the use of large south-east facing windows that accentuate the landscape's view, and invite the occupant to explore the outside.



### Character 1:

Samantha Barrow, 28, Female, Musician  
 From Denmark, enrolled in a music programme at RNCM, hoping to collaborate with local musicians as part of her thesis. Hosts workshops and music lessons in her free time.

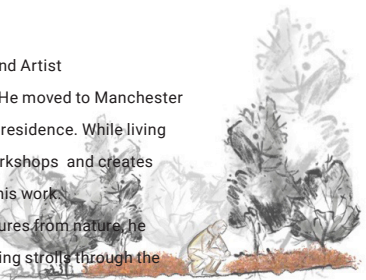
When she isn't practicing her violin, she enjoys baking and playing for the local community



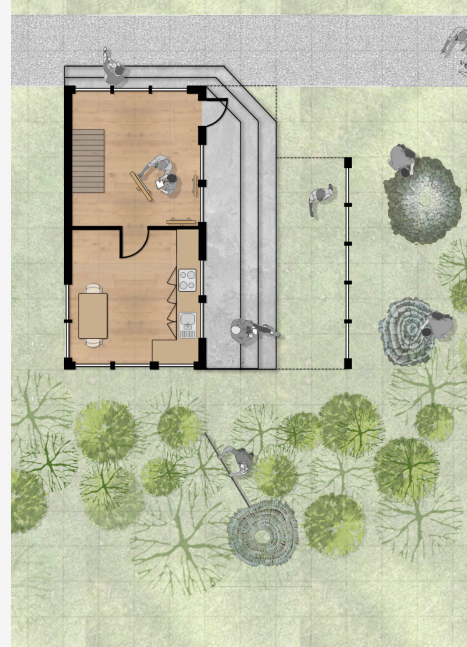
### Character 2

Adam Baker, 34, Male, Land Artist  
 Born in the Lake District. He moved to Manchester for a month-long artist in residence. While living in the house, he hosts workshops and creates exhibitions to showcase his work.

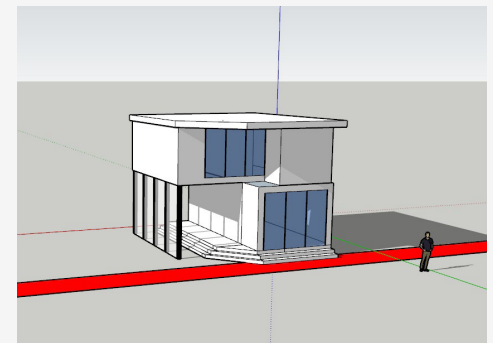
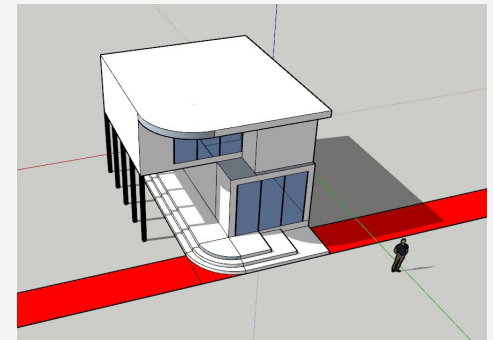
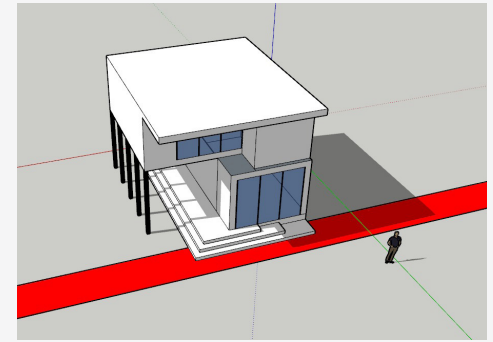
When not creating sculptures from nature, he enjoys gardening and taking strolls through the countryside.



GROUND FLOOR PLAN  
 Communal Kitchen and Living



FIRST FLOOR PLAN  
 Private (Bed and Bathroom)





PROPOSAL 2 CREATIVES RENDER

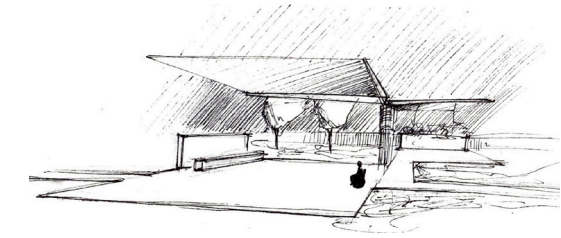
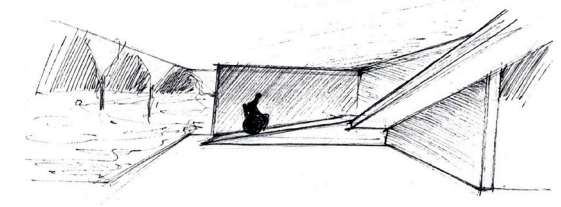
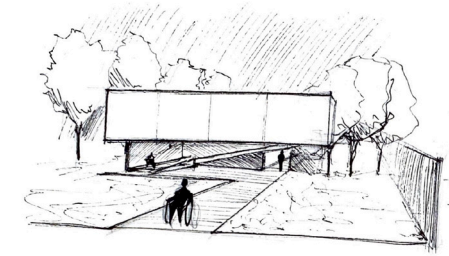
## Proposal 3 Disability Campaigners

Disability Campaigners' House is a three-storey stone-clad building which encapsulates two main purposes: on the ground floor it hosts events organized within the Disability Campaign (e.g. workshops and presentations) while the upper floors make up a private residence.

The design is mainly aimed at two disabled users who run the Disability Campaign which brings awareness to the issues they are faced with. The relationship of the users can vary from close friendship to strictly work partnership, as the design of the house allows for privacy for each occupant.

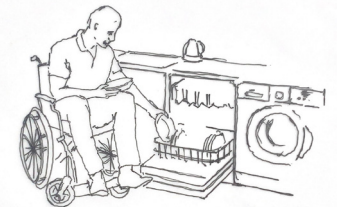
The goal was to create an accessible, private, safe space, which accurately responds to the context while also being aesthetically pleasing.

The safety and accessibility of the design rely in the spacious rooms and the disabled-specific bathrooms and elevators. The privacy aspect was emphasized by placing the private components on the upper floors, while the only public space is on the ground floor. The design is aesthetically pleasing especially when it comes to the choice of materials, e.g. curtain walls and natural stone cladding.



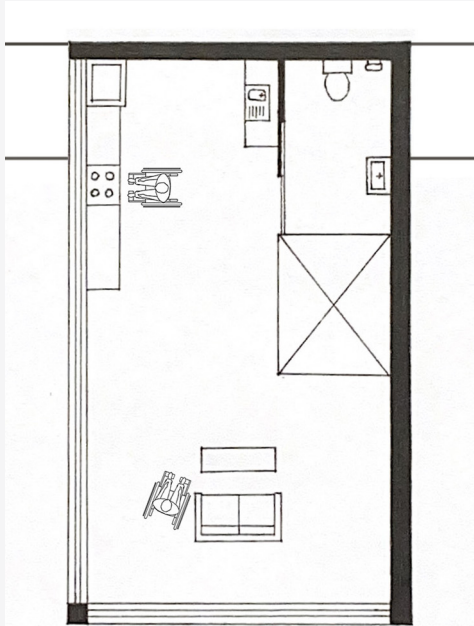
INITIAL SKETCHES

Erwin Smith, 27, Male, 78kg  
Born in Liverpool and studied his BA in Salford. Erwin currently works in Manchester.



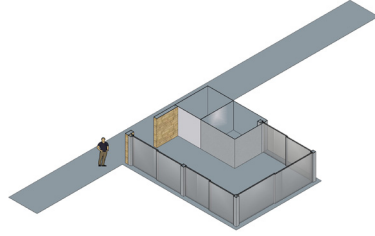
Annie Ross, 34, Female, 59kg  
Born in Manchester and completed her apprenticeship in London. Annie moved back to Manchester in the hopes of finding work.



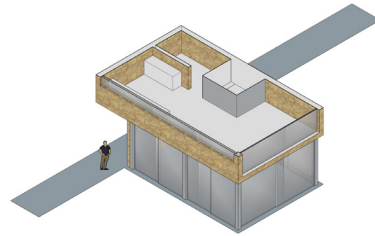


FIRST FLOOR PLAN  
Communal Kitchen and Living

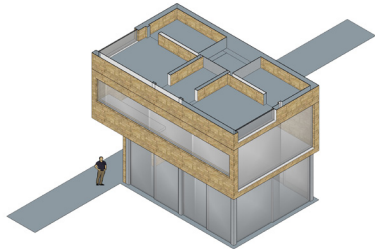
3D - GROUND FLOOR



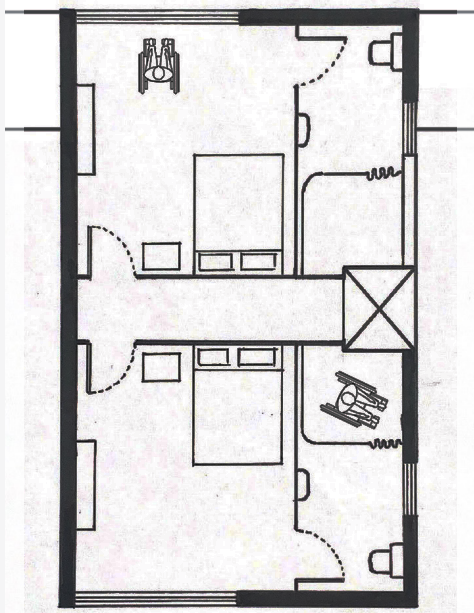
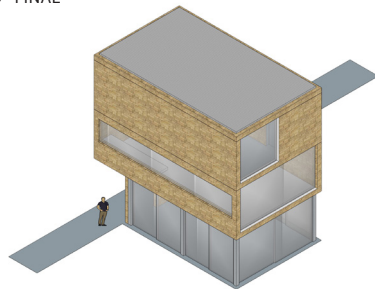
3D - FIRST FLOOR



3D - SECOND FLOOR



3D - FINAL



SECOND FLOOR PLAN  
Private (Bed and Bathrooms)



PROPOSAL 3 DISABILITY CAMPAIGNERS RENDER



## ABOUT

Each year the MSA Live (formerly Events) programme unites M Arch. year 01 with B Arch. year 01 and 02 and M Land. Arch 01 in mixed-year teams to undertake live projects with external partners to create social impact.

## LIVE PROJECTS

All MSA Live projects are live. A live project is where an educational organisation and an external partner develop a brief, timescale, and outcome for their mutual benefit.

## SOCIAL IMPACT

All MSA Live projects have social impact. Social impact is the effect an organization's actions have on the well-being of a community. Our agendas are set by our external collaborators.

## EXTERNAL PARTNERS

MSA LIVE projects work with many organisations: charities, community groups, social enterprises, community interest companies, researchers, practitioners and educators.

## STUDENT-LED

Our MSA masters students take the lead in the project conception, brief development, delivery and co-ordination of a small project. Other cohorts join for an eventful 2 weeks of activities at the end of the academic year.

## KNOWLEDGE TRANSFER

Working in teams within and across year groups and courses; MSA students participate in peer to peer learning. In addition, collaborators, participants and students engage in the transfer of tangible and intellectual property, expertise, learning and skills.

## LARGE SCALE

This year approximately 600 students from 4 cohorts in MSA will work on 42 projects with partners.

## QUESTIONS

For questions about MSA Live 21 contact MSA Live Lead: Becky Sobell:  
**b.sobell@mmu.ac.uk**

## BLOG

[live.msa.ac.uk/2021](http://live.msa.ac.uk/2021)

## SOCIAL

#MSALive21

@TheMSArch

@MLA\_TheMSArch

## WEBSITE

[www.msa.ac.uk](http://www.msa.ac.uk)