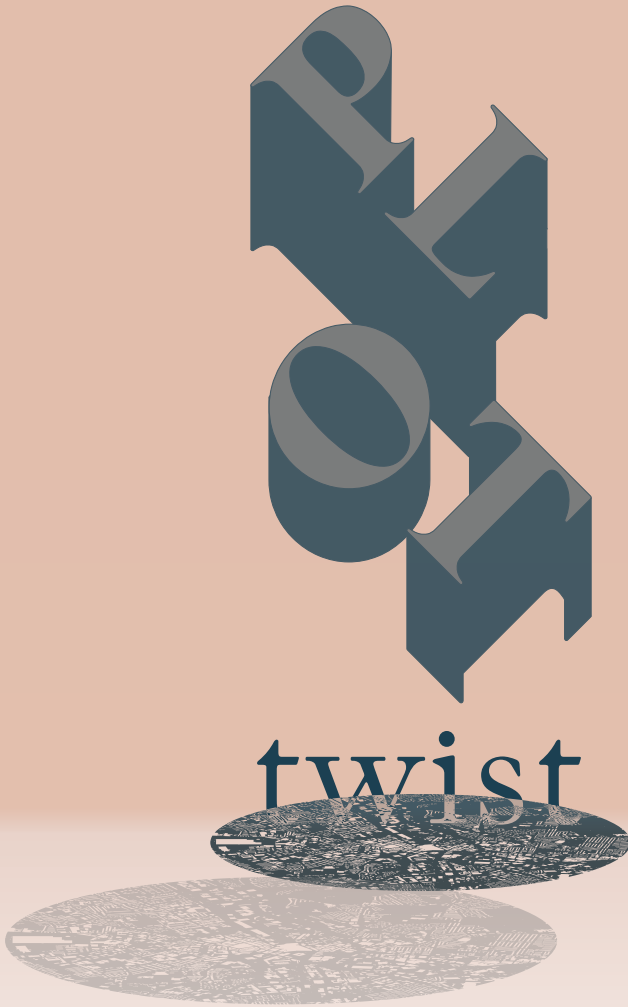


MANCHESTER SCHOOL OF ARCHITECTURE



Visit msa.ac.uk for more information



MSA LIVE 21

Team

Robert Crutchley-Macleay (M Arch 01)

Conor Joyce (M Arch 01)

Hayden Moores (M Arch 01)

Oliver Radcliffe (M Arch 01)

Adam Valman (M Arch 01)

Daniel Walsh (M Arch 01)

Ron Aladjem (BA 01)

Finn Duncan (BA 01)

Isobel Hawker (BA 01)

Talha Kassim (BA 01)

Laura-Elena Popa (BA 01)

Flynn Mcgee (BA 02)

Marina Catalina (BA 02)

Laura Simonsen (BA 02)

Partners

The Bradford Civic Society is a registered charity with their mantra reading 'Since 1942, Bradford Civic Society has championed Bradford's heritage and built environment. We're on a mission to encourage Bradfordians to love where they live.'

Keiran Thompson and Simon Cunninham, a respected member and the society and the chair of the society respectively, have been influential in the start up and execution of the project.

Agenda

Plot Twist

In Plot-Twist, our agenda is to reimagine the urban environment. Working with a disused site adjacent to the Forster Square station, the final proposal brings together community, culture and sustainability in a way unlike any other asset Bradford has to offer. We've been working closely with Bradford Civic Society and the 2025 City of Culture, aiming to produce a scheme which will enhance the city and celebrate the cultural diversity Bradford has to offer.

The bid for the 2025 City of Culture is the continuation of a national award granted to a city of the committee's choice once every 4 years. A city winning this award would grant them a large sum of money to invest within towards grass root solutions and ideas put forward for improving the city. In addition to this, it gives the city the possible opportunity to host prestigious awards such as the Turner Prize Award. Winning the award acts 'as a catalyst for creative place-making and culture-led regeneration' (Bradford, n/a). Bradford is home to the Bradford Producing Hub, a pilot project funded by Arts Council England. 1.5 million pounds were given in an effort to develop local talent and boost the city's ability to produce new work, specifically within the cultural fields. The opportunities the bid presents, and the current programmes and schemes being carried out are great contributors to Bradford's scene.

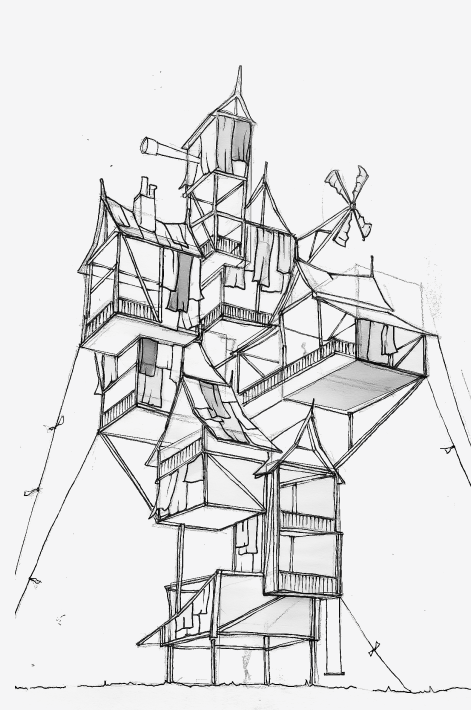
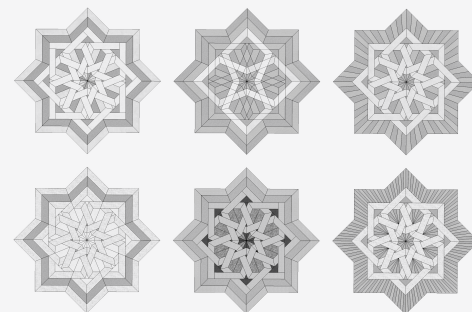
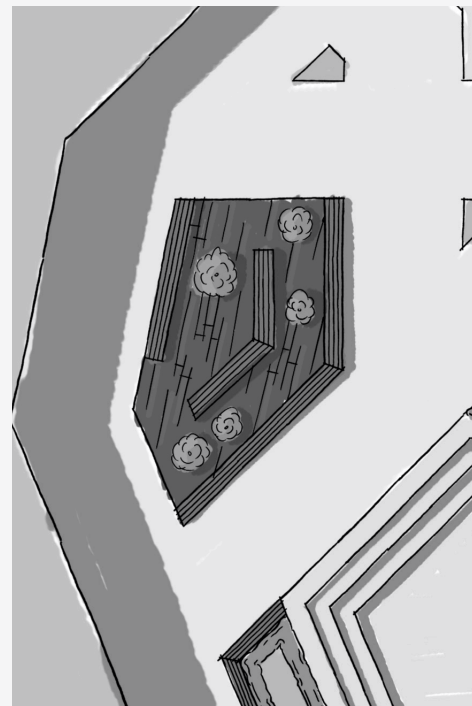
An important topic raised by the Bradford Cultural Report, is the desire to create a grass-roots, producing city. What they specify as a producing city is not to invest in large infrastructure and more factories, but instead influence and provide for their population to pursue creative interests such as farming as a way of making small 'grass-roots' companies, then using these hobbies to form a living by selling the creations. There is not so much as an economic drive behind it, but a desire for culture and input from their communities. In order to achieve this, it's important that these creatives have a platform in which they can achieve these goals. They need facilities to produce and retail their goods which may not be adequate in their current homes as well as the equipment and teaching needed in order to succeed.

This is where Plot-Twist comes in, with the intention of taking on board these needs and desires of the Civic Society and bid for the City of Culture 2025, and adopting these in an intriguing masterplan for the disused Forster Square site.

Methodology

In order to achieve the aims set out in the agenda, the following methodology has been adopted in an attempt to maximise on the groups strengths in producing the highest quality proposal.

Due to the project's sensitive nature in working closely with Bradford's different cultures, the starting point was deeply rooted in research and precedent studies. The importance of this cannot be overstated in avoiding cultural appropriation and instead celebrating the diversity Bradford has to offer. Model-making charrettes and precedent analysis were key drivers in the design of the scheme, allowing the group members of Plot-Twist to experiment with form and function with regards to the cultures that call Bradford home. The models and sketches produced helped to realise the initial thoughts of the group from a conceptual standpoint into a material output. The outcomes of this led to the creation of subgroups, which were each given the task of celebrating a specific culture that comprises Bradford's ethnic diversity. The personnel of these subgroups were determined by the differing skillsets and interests of the team. Constant communication was vital in ensuring that each subgroup's output acted cohesively in producing a wider masterplan of the regenerated site.



Cultural Expo

In conversations with members of the Bradford Civic Society, they were keen to explore considered, radical yet realistic approaches to the disused site that resides adjacent to the Forster Square station.

Plot-Twist's proposal exhibits a new cultural gateway into the heart of Bradford. The themes of diversity, community, and agriculture have been explored in rejuvenating the Forster Square site to connect other Northernly areas with the city's key infrastructure. New green space, an urban farm, a city gateway, and a point-marker/viewing tower are established accordingly through a series of pavilions. Three pavilions come together to create a cultural expo, a celebration of the diverse ethnicities that call Bradford home. Each of these pavilions begin to explore a different culture within the city.

Pavilion Bazaar showcases the prevalent Pakistani culture in Bradford by introducing a new fabric exhibition, food market and urban farm. Pavilion A'rose' creates a new point-marker to be seen from the surrounding areas of Bradford, whilst simultaneously educating against the discriminatory views held against the Roma-Gypsy community. Finally Pavilion Girih uses cultural Arabic patterns to create a new gateway to the city

through a system of pathways leading from Forster Square station.

The pavilion also houses a gallery space, exhibiting a journey of the history of Bradford. Each of the three pavilions celebrate the individual cultures yet work cohesively to form the wider masterplan of the site. The overarching proposal will seek to revitalise the current site. Pavilion Bazaar seeks to emphasise and express existing architectural elements, such as the last remanence of the historic Royal mail building, while linking a newly implemented urban farm.

Pavilion A'rose' intends to provide a new landmark, identifying the Forster Square Stations' whereabouts to those within the city, as well as presenting grand views throughout the site and over Bradford's skyline.

Pavilion Girih acts as the gateway to the city, aiming to stage a new series of pathways to interlink spaces throughout the site, as well as a new light rail service that will provide inner-city links. Aligning with the economic recovery plan, Plot Twist will consider the past, and existing city fabric to create a more holistic, sustainable and inviting entrance to the city, mindful of ethnic diversities to provide an exciting alternative future to Bradford.

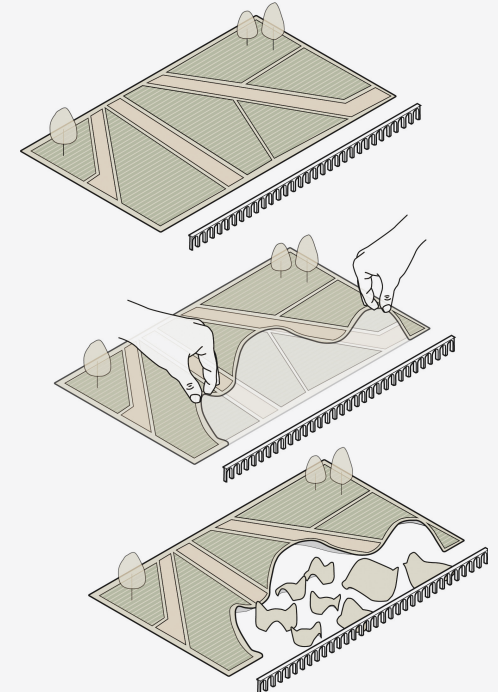
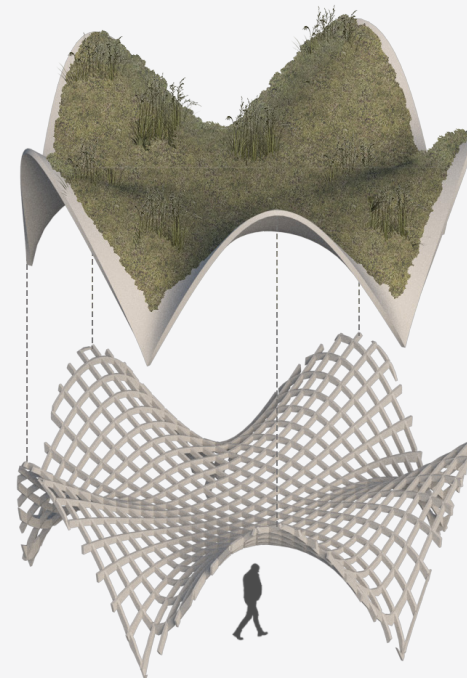


Pavilion Bazaar

Pavilion Bazaar utilises Bradford's ethnic diversity, particularly the abundant Pakistani culture. The proposal consists of a flowing network of parametric forms. The fluid assemblance juxtaposes the linearity of the adjacent wall, which has new archways punched through to open the entire site.

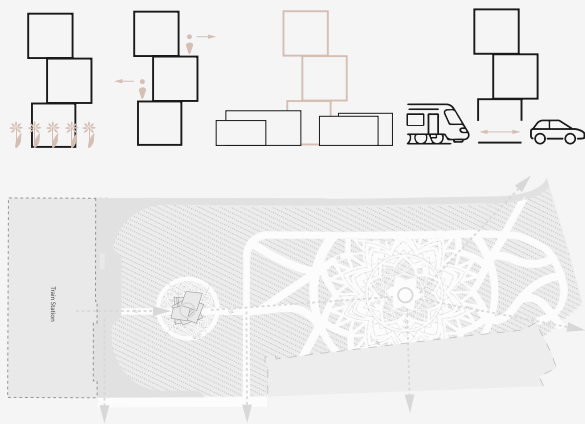
Almost parasitic in nature, initial intrigue is drawn through views and vistas extending from Forster Square Station. Parametric modules house Pakistani street food stalls, conveying the rich variety of foods within the culture. Set further back are the kitchens, farms, and herb gardens which reside as growing and preparation spaces dedicated to the vegetables, herbs and spices all used in Pakistani cuisine. These provide beautiful earthy aromas which disperse throughout the spaces. Here, the user finds seating in a holistic, green setting which envelopes the entire pavilion, complementing the natural, muted tones and forms. The remaining larger modules comprise a fabric exhibition space in which the craftsmanship and artistry of Pakistani fabrics and patterns are exhibited for all to see.

"One of the most important aspects of being part of this group was that once someone had an idea, others would give feedback and help each other solve different problems that appeared in the design of the pavilion." Catalina



Pavilion a'Rose'

Using the culture from Roma Gypsies, we can begin to see patterns in their housing and transport with exaggerated illustrations of these stacked, rickety housing with pathways and circulation around. Drawing from these, we've theorised that the site would benefit from a tower landmark, holding to account the new importance of the area and highlighting the station.

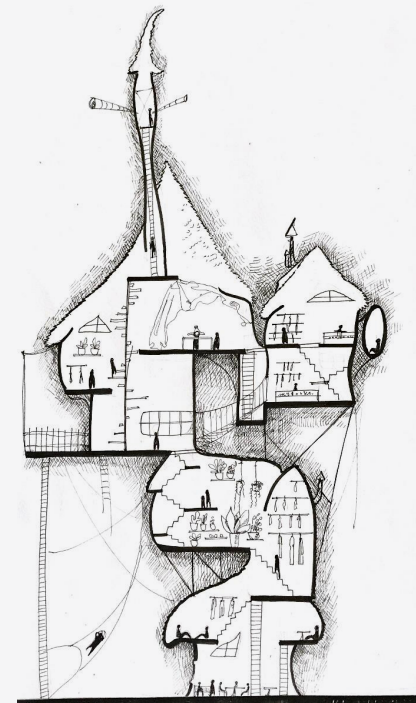
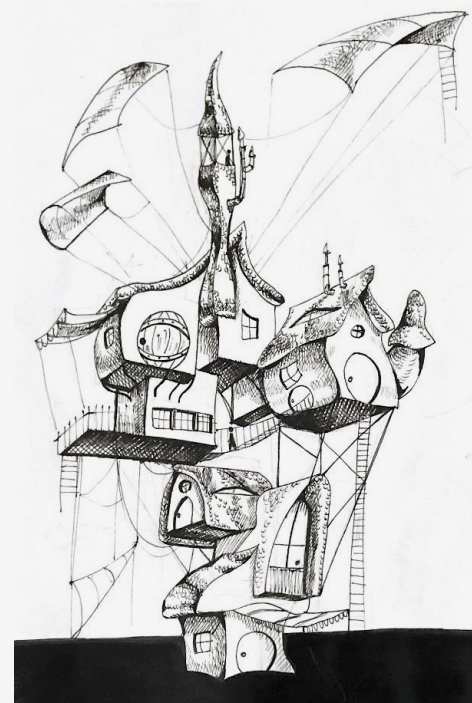


The pavilion a'rose' sits within a farm made up of roses, which are a symbol of hospitality in Romani culture. The prominent location of the pavilion and it's farm is suggestive of a hospitable welcome to the city of Bradford. Thus the site becomes a buffer between people commuting and a common appearance and link to the culture.



By using this tower that can be traversed upwards, we can craft views of Bradford upon arrival to the city as well as creating an obelisk or monument that signifies an entrance to the city that can be recognised from the distant perimeters of Bradford.

"We were listened to and encouraged to explore our creativity. In terms of the actual process of designing these pavilions, the level of inter-helping and collaborating between the members of the group was what made me realize what teamwork means." - Laura P



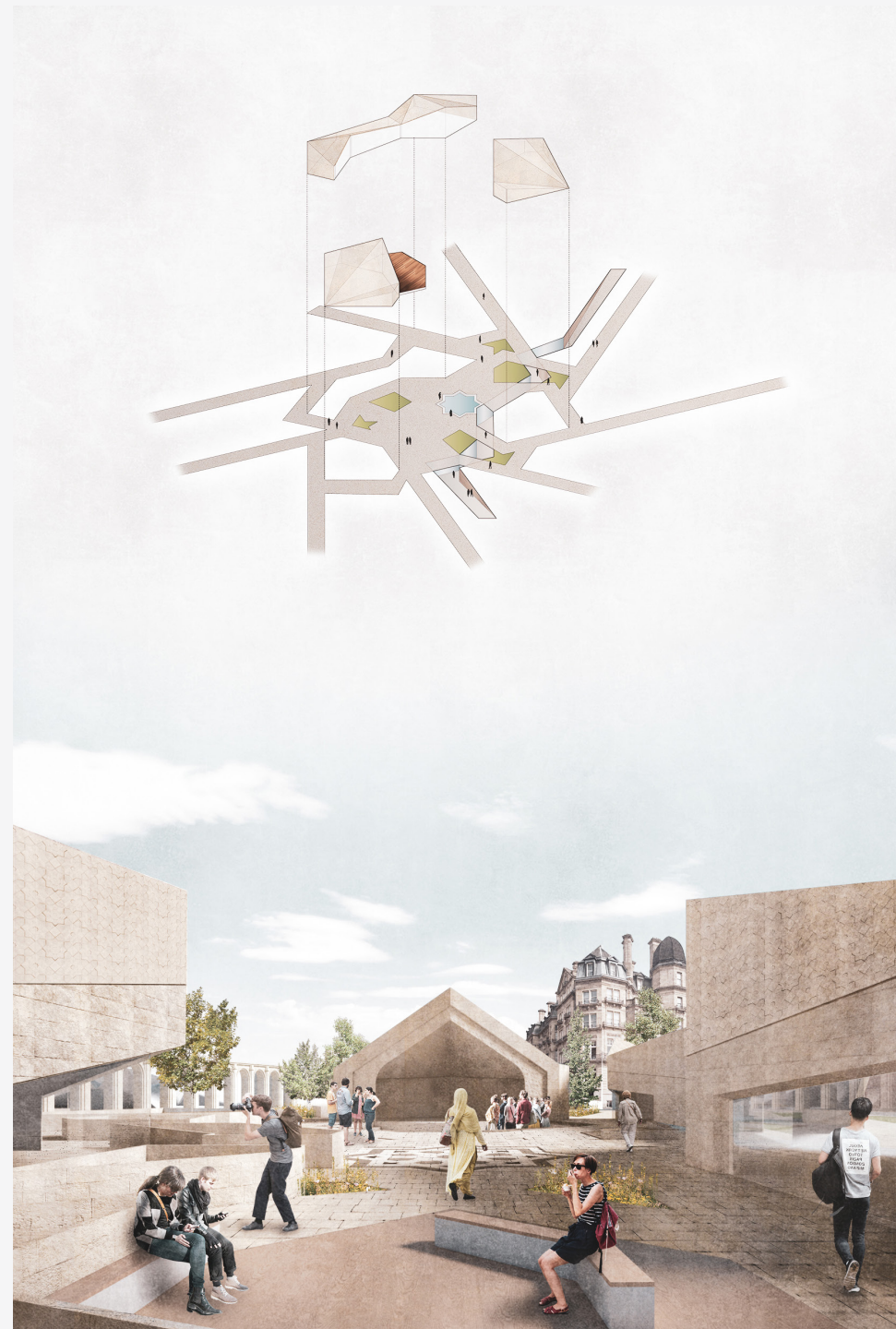
Pavilion Girih

Bradford has an abundant history that deserves to be told. Pavilion Girih combines an information centre, a performance area and multiple gallery spaces to create a destination celebrating the past, present and future of the city.

The information centre is a starting point for visitors to the city of Bradford. Here, you can learn about the city's attractions, see artwork and sculptures from local artists, and much more, before heading off on the rest of your journey. The lower gallery is a dramatic subterranean tour through Bradford's timeline, telling the story from its very beginnings to the modern day and beyond. Taking cues from the Peace Gardens, Sheffield and Queens Square, Ontario, the central fountain provides a focal point for the pavilion.

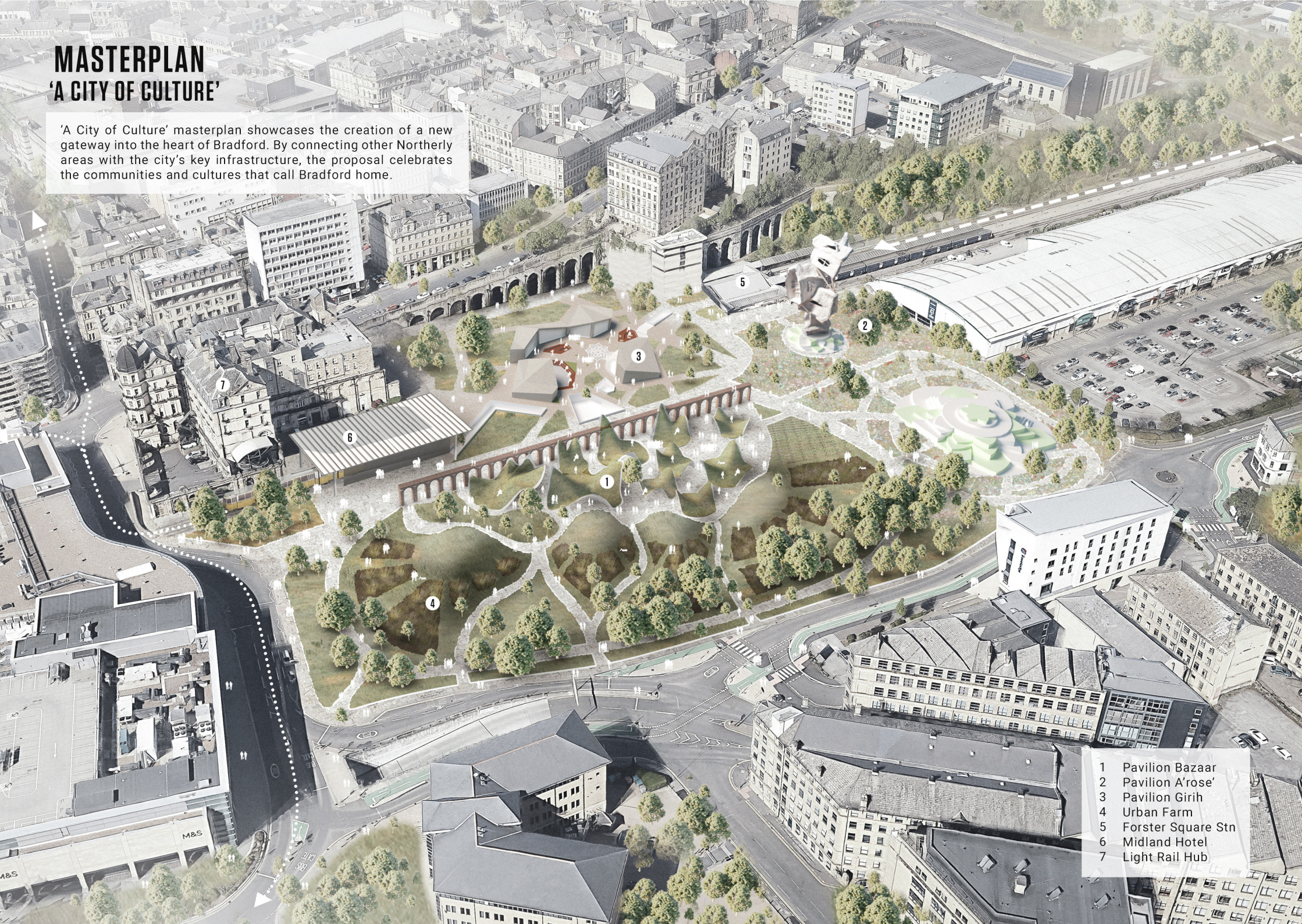
The pavilion's design is inspired by the changing history of the city. Solid ashlar stone and bespoke reconstituted Islamic-inspired patterned blocks create a striking effect that combines the local architectural vernacular with a nod to the many muslim communities that call Bradford home. Visit the Bradford Story and find out for yourself what the city can offer you.

"Throughout the whole process we paid attention to integrate everyone's ideas and thinking into the final visualization of our joined team effort." - Laura S



MASTERPLAN 'A CITY OF CULTURE'

'A City of Culture' masterplan showcases the creation of a new gateway into the heart of Bradford. By connecting other Northernly areas with the city's key infrastructure, the proposal celebrates the communities and cultures that call Bradford home.



- 1 Pavilion Bazaar
- 2 Pavilion A'rose'
- 3 Pavilion Girih
- 4 Urban Farm
- 5 Forster Square Stn
- 6 Midland Hotel
- 7 Light Rail Hub

ABOUT

Each year the MSA Live (formerly Events) programme unites M Arch. year 01 with B Arch. year 01 and 02 and M Land. Arch 01 in mixed-year teams to undertake live projects with external partners to create social impact.

LIVE PROJECTS

All MSA Live projects are live. A live project is where an educational organisation and an external partner develop a brief, timescale, and outcome for their mutual benefit.

SOCIAL IMPACT

All MSA Live projects have social impact. Social impact is the effect an organization's actions have on the well-being of a community. Our agendas are set by our external collaborators.

EXTERNAL PARTNERS

MSA LIVE projects work with many organisations: charities, community groups, social enterprises, community interest companies, researchers, practitioners and educators.

STUDENT-LED

Our MSA masters students take the lead in the project conception, brief development, delivery and co-ordination of a small project. Other cohorts join for an eventful 2 weeks of activities at the end of the academic year.

KNOWLEDGE TRANSFER

Working in teams within and across year groups and courses; MSA students participate in peer to peer learning. In addition, collaborators, participants and students engage in the transfer of tangible and intellectual property, expertise, learning and skills.

LARGE SCALE

This year approximately 600 students from 4 cohorts in MSA will work on 42 projects with partners.

QUESTIONS

For questions about MSA Live 21 contact MSA Live Lead: Becky Sobell:
b.sobell@mmu.ac.uk

BLOG

live.msa.ac.uk/2021

SOCIAL

#MSALive21

@TheMSArch

@MLA_TheMSArch

WEBSITE

www.msa.ac.uk