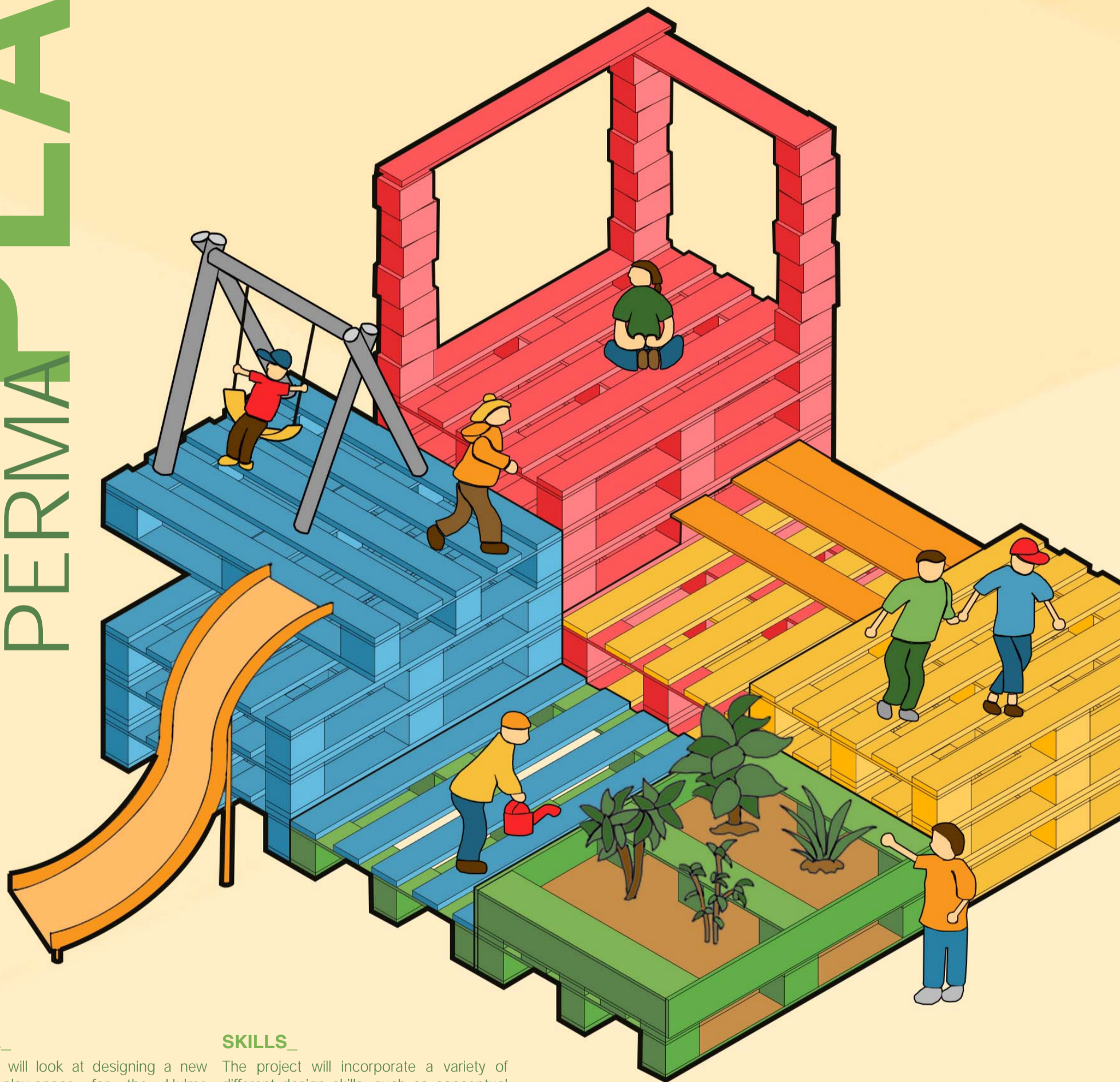


MANCHESTER SCHOOL OF ARCHITECTURE

PERMA
PLAY

fashioning a new
childrens play space
for the **hulme**
community garden



AGENDA_

The project will look at designing a new children's play-space for the Hulme Community Garden using low-tech materials and sustainable "permaculture" design methods. We will liaise directly with the garden to produce a handbook for realising the design.

SKILLS_

The project will incorporate a variety of different design skills, such as conceptual design, ecological design theory, hands-on + low-tech construction, as well as presentation. Don't be scared - we are excited to help you get better at using these skills!

Visit msa.ac.uk for more information