

MANCHESTER SCHOOL OF ARCHITECTURE



FROM THE GROUND UP

Visit msa.ac.uk for more information



MSA LIVE 24

Team

Edward Bousfield (MArch1)

Hayley Kirui (MArch1)

Julia Eleanor Katie Hill (MArch1)

Samantha Cutler (MArch1)

Rachel Elizabeth Thomas (MA AR)

Amy French (BA1)

Benjamin Tomalin (BA1)

Ilhan Mohamad Bin Azlan (BA1)

Kyan Hoque (BA1)

Thanrada McGregor (BA1)

Agata Motyl (BA2)

Alicia Booth (BA2)

Grace Baker (BA2)

Wang Yixia (BA2)

Xiucheng Duan (BA2)

Apurva Sudhakar Patil (MLA1)

Partners

The project 'From The Ground Up' is in collaboration with Manchester Climate Alliance and Ardwick Climate Action - groups that are passionate about creating a greener, more sustainable future.

The Manchester Climate Alliance is a coalition of existing groups and individuals concerned about the escalating climate crisis. Their mission is to facilitate collaboration among climate activists, fostering connections and joint efforts to advance towards a zero-carbon future. They offer support, training, and opportunities for campaigning and lobbying. The alliance is inclusive, welcoming all who seek a sustainable future, regardless of political affiliation. Their ultimate goal is to prioritize climate considerations in all levels of government decision-making, from local to national.

Ardwick Climate Action is a grassroots organization in Manchester dedicated to protecting the local environment. Their mission is to engage the community in renewing green spaces, monitoring pollution, and advocating for climate awareness. They focus on Ardwick, an economically disadvantaged area, aiming to reconnect residents with nature and address the urgent climate crisis through community-driven action.

Introduction

From The Ground Up

This project looks at how we can 'Green Up' Manchester's skyline to increase biodiversity in the city. We are collaborating with Manchester Climate Alliance and Ardwick Climate Action - groups who are passionate about creating a greener, more sustainable future.

The plan is to design an innovative green facade for the Renold Building on the former UMIST campus. Our group will work to create visuals that will inspire and encourage decision and policy makers to help tackle the deepening climate crisis. This will benefit all of Manchester's residents and hopefully lead to a wider scheme being developed across the city and the UK.

Introduction

The Project

The UMIST Campus is soon to undergo a £1.7B redevelopment as part of a joint venture between Bruntwood SciTech and the University of Manchester. The aim of the MSA Live team was to work in collaboration with Manchester Climate Alliance and Ardwick Climate Action to design and develop different facade concepts for how the redevelopment could incorporate more greenery on the buildings.

Our Collaborators



Manchester Climate Alliance is a coalition of various groups and concerned individuals united by the escalating climate crisis. This alliance facilitates connections among climate activists, allowing them to collaborate towards a zero-carbon future. By sharing ideas, providing mutual support, and participating in joint activities, training, campaigns, and lobbying efforts, they work together to address climate challenges.

Ardwick Climate Action is a group whose mission is to safeguard our local environment through grassroots advocacy and community engagement. Their efforts include revitalizing green spaces, monitoring pollution levels, and promoting climate awareness and action within the community.

Together, the groups approached the Manchester School of Architecture to engage with the students in the MSA LIVE programme, with the hope of obtaining material to aid in convincing Bruntwood SciTech to consider a more climate conscious approach for the redevelopment of the UMIST campus. Longer term, they hoped this work could be used as a precedent for other buildings in the city, with the aim of creating a greener Manchester City skyline.

Image Left:
The Renold Building



The Team



HAYLEY

Team Leader/ Point of Contact



SAM

Lead Social Communications &
Correspondence Manager



JULIA

Creative Director



RACHEL

Researcher



ED

Resource Manager



Collaborator Meets & Site Visits

The group maintained consistent communication with the clients, meeting members from the Manchester Climate Alliance and Ardwick Climate Action every two weeks to discuss the progress made. This ensured alignment with the client's goals and kept them informed on the research being undertaken. The clients also organised meetings with external consultants such as Jason Williams, also known as the cloud gardener, to discuss specifics such as appropriate native plant species suitable for use in the development.

Both the client and the MSA LIVE team attended a site visit, guided by one of the representatives from Bruntwood SciTech, which provided contextual knowledge about the site and the potential future of the buildings. In addition, this allowed for a deeper understanding of the Renold building, which would become the main focus of the work the group would undertake in the action weeks.

The MSA LIVE team developed concepts for three different types of intervention. Light touch, involving the installation of modular plant pots to the external facade. Medium scale intervention, centred around the use of a rainscreen facade with integrated planting panels. The third and final option explored using living plant walls mounted on the facade to maximise the amount of greenery. Alongside these concepts, moodboards were used to determine the style of output the client desired, such that the programme for the action weeks could be catered in accordance.



The Action Week Timeline



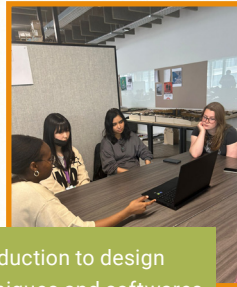
Site Visit and the 'Big Draw'!

DAY 2



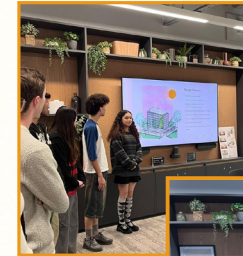
Introduction to design techniques and softwares

DAY 4



Putting together the final design options...

DAY 6



Presentation Day!

DAY 7



DAY 1

Meeting the team and introduction to the project.



DAY 3

Concept Development...



DAY 5

Design development and discussions...



DAY 8 & 9

Final Submissions...



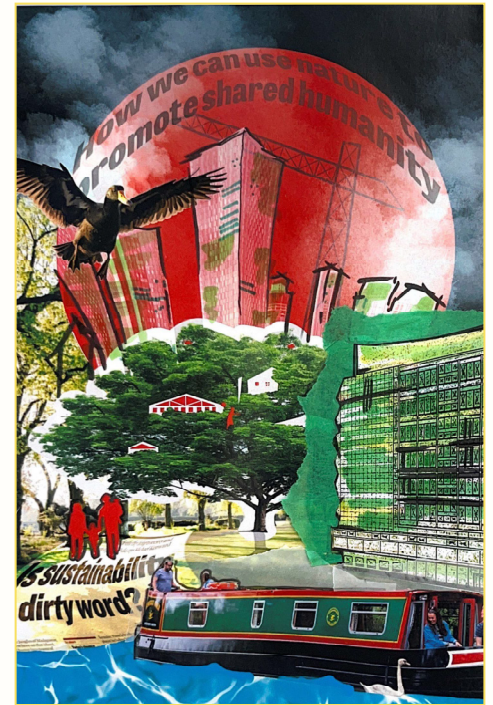
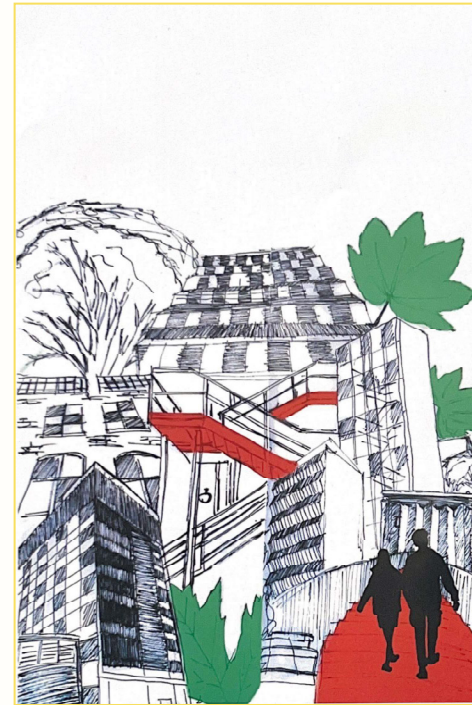
The 'BIG DRAW'!

The second day of the Action Week commenced with a vibrant exploration of the UMIST site under the rare Mancunian sun. Students were immersed in the transformative aspirations outlined by Bruntwood, gaining insight into the potential revitalization of selected facades. Engaging in collaborative discourse, participants contributed suggestions and ideas, fostering a dynamic exchange of perspectives.

In the afternoon session, the Big Draw activity served as a catalyst for creative exploration and experimentation. Emphasizing creative freedom, students were encouraged to delve into abstract collage design, utilizing a diverse array of mixed media and digital tools. The activity not only provided a platform for artistic expression but also nurtured a sense of camaraderie among participants, evidenced by their enthusiastic engagement, even extending through the lunch break.

These activities exemplified the integration of theoretical concepts with hands-on application, facilitating a multifaceted learning experience. By fostering an environment conducive to both individual creativity and collaborative ideation, participants were empowered to embrace diverse approaches to design while forging meaningful connections with peers.

The activity allowed students to present their diverse creations, fostering community and appreciation. The event's success highlighted the importance of a supportive environment for artistic expression and collaborative learning, setting a promising tone for future engagement with the group.



Design & Final Presentation

Over the course of seven dynamic days, our collaborative journey with the group unfolded with remarkable intensity and achievement. Commencing with concept development and team-building exercises, such as the engaging paper tower competition, the week progressed seamlessly into the realm of design development. Guided by a comprehensive understanding of student aspirations, tutorials on essential software tools, and the integration of digital concepts with traditional design principles, the students navigated a path toward refined creative expression.

Day by day, the iterative process of design refinement unfolded, marked by individual consultations, pin-up sessions, and a palpable dedication to craft. The synthesis of feedback and active reflection culminated in a crescendo of achievement on the presentation day. Armed with final presentations, our students attended the occasion, impressing clients and collaborators alike with the depth and sophistication of their work.

The culminating presentation with our esteemed partners, Bruntdwood, Manchester Climate Alliance, and Ardwick Climate Action, served as a testament to the transformative potential of collaborative learning. Witnessing the enthusiastic reception of our students' work, including accolades surpassing professional benchmarks, underscored the significance of experiential education and real-world engagement.

We extend heartfelt appreciation to our dedicated students whose tireless efforts and creativity fueled the success of the program. Moreover, we acknowledge the invaluable contributions of our collaborators, whose support and guidance enriched the journey from inception to realization.

In conclusion, the experience gained during MSA Live '24, epitomized the power of interdisciplinary collaboration, experiential learning, and real-world application. As we bid farewell to this chapter, we carry forward lessons learned, bonds forged, and a profound sense of pride in the achievements of all involved.

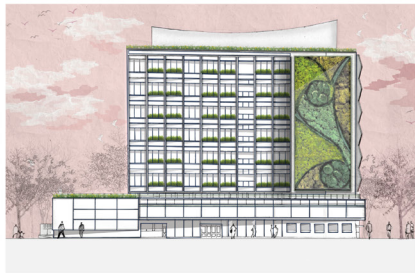


OPTION 1 - LIVING WALLS

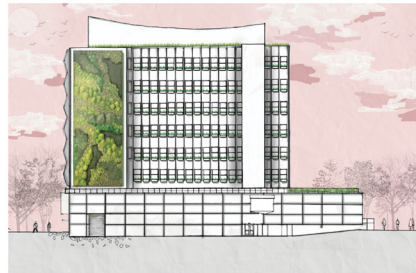


Concept Overview

- 1400m² New planting created on site
- 182kg Atmospheric Dust removed per year
- 1400 People's annual oxygen supply
- 6% Biodiversity net gain for UMIST site



Elevation South



Elevation North



Elevation West



Atmospheric

OPTION 2 - MODULAR FACADES



Elevation South



Elevation North



Elevation West



Atmospheric



Birds eye view South



Birds eye view North

- 1800m² New planting created on site
- 236kg Atmospheric Dust removed per year
- 1800 People's annual oxygen supply
- 8% Biodiversity net gain for UMIST Site

ABOUT

Each year the MSA LIVE programme unites Masters Architecture year 1 and Masters of Architecture & Adaptive Resuse students with those in BA foundation, year 1 and year 2 and Masters Landscape Architecture 1 in mixed-year teams to undertake live projects with external partners to create social impact.

LIVE PROJECTS

All MSA LIVE projects are live. A live project is where an educational organisation and an external partner develop a brief, timescale, and outcome for their mutual benefit.

SOCIAL IMPACT

All MSA LIVE projects are for community benefit or have social impact. Social impact is the effect an organization's actions have on the well-being of a community. Our agendas are set by our external collaborators.

EXTERNAL PARTNERS

MSA LIVE projects work with many organisations: charities, community groups, social enterprises, community interest companies, researchers, practitioners and educators.

STUDENT-LED

Our MSA masters students take the lead in the project conception, brief development, delivery and co-ordination of a small project. Other cohorts joined for an eventful 2 weeks of activities at the end of the academic year.

KNOWLEDGE TRANSFER

Working in teams within and across year groups and courses; MSA students participate in peer to peer learning. In addition, collaborators, participants and students engage in the transfer of tangible and intellectual property, expertise, learning and skills.

LARGE SCALE

This year approximately 600 students from 6 cohorts in MSA have worked on 40 projects with partners.

QUESTIONS

For questions about MSA LIVE please contact the MSA LIVE team:

msalive@mmu.ac.uk

BLOG

live.msa.ac.uk/2024

SOCIAL

#MSALive24

@msa.live.24

@TheMSArch

@MLA_TheMSArch

WEBSITE

www.msa.ac.uk