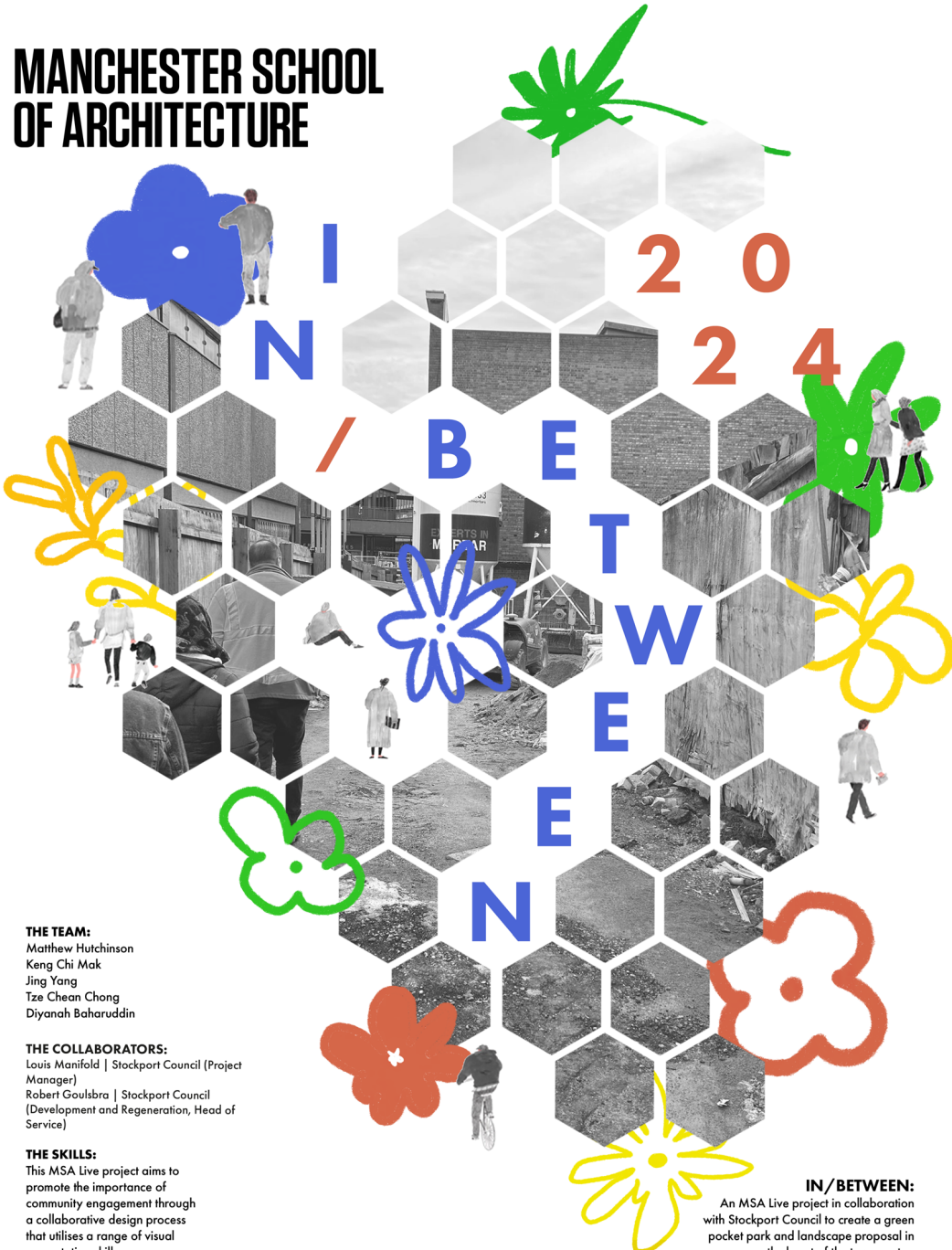


MANCHESTER SCHOOL OF ARCHITECTURE



THE TEAM:

Matthew Hutchinson
Keng Chi Mak
Jing Yang
Tze Chean Chong
Diyannah Baharuddin

THE COLLABORATORS:

Louis Manifold | Stockport Council (Project Manager)
Robert Goulsbra | Stockport Council (Development and Regeneration, Head of Service)

THE SKILLS:

This MSA Live project aims to promote the importance of community engagement through a collaborative design process that utilises a range of visual presentation skills.

IN/BETWEEN:

An MSA Live project in collaboration with Stockport Council to create a green pocket park and landscape proposal in the heart of the town centre.

Visit msa.ac.uk for more information



**MSA
LIVE 24**

Team

Matthew Hutchinson (MArch1)

Keng Chi Mak (MArch1)

Jing Yang (MA AR)

Tze Chean Chong (MArch1)

Diyanah Baharuddin (MArch1)

Arena Antonenko (BA1)

Guzin Defne Uman (BA1)

Holly Froggatt (BA1)

Sara Sabaa A Bahanan (BA1)

Jericho Estrada (BA1)

Cate Lynn Carpenter (BA2)

James Coop (BA2)

Emily Mackey (BA2)

Rekaya Bouazza (BA2)

Yanxi Lin Jiang (BA2)

Yubing Chen (MLA1)

Partners

The key partners and collaborators for the IN/BETWEEN MSA Live project are Louis Manifold (Project Manager) and Robert Goulsbra (Development and Regeneration, Head of Service), both representing the Stockport Metropolitan Borough Council to bring this initiative to fruition.

Aligned with the Council's regeneration development plan for Stockport's high street, the project aims to create a more welcoming green pocket space for the community and visitors.

Currently, the high street is undergoing extensive construction to enhance the urban environment of Merseyway and the Town Centre, with a brand-new Innovation Centre set to open in August 2024. The regeneration plan also includes re-purposing eight retail units to establish a new learning and discovery centre.

This collaboration offers MSA students a unique opportunity to actively participate in the urban regeneration process of Deanery Way North, Stockport!

Introduction

IN/BETWEEN

IN/BETWEEN is an MSA Live project at Deanery Way North (Merseyway) Pocket Park, aiming to transform an underutilised area into a vibrant and inviting public space. This initiative addresses the need for accessible and family-friendly amenities, in line with the Stockport Metropolitan Borough Council's broader urban regeneration efforts.

The lack of a dedicated public space in this location inspired the creation of the Deanery Way North Pocket Park. The project aims to fill this gap by enhancing the urban environment to meet the needs of the community, visitors, and residents. This MSA Live collaboration will propose a welcoming and inclusive environment that encourages social interaction and relaxation, supporting the Council's vision for a vibrant and family-friendly town centre.

The project involves collaborative engagement with stakeholders to gather input and preferences. The conceptualisation and design of the pocket park will encompass layout, amenities, and landscaping. Having permanent and temporary proposals will allow flexibility and options within the final output. This booklet will document our design process step-by-step to provide a clear direction of design intentions that respond and adapt to the surrounding environment and community needs.

The permanent urban proposal will create a lasting, functional space, while the temporary urban proposal will offer a modular approach, providing flexibility and choice to the community. The temporary solution aims to leverage Stockport's existing market and food culture, creating a pocket market catering to everyday needs.



About The Site

The project site is in Silk Square, a proposed square north of the central spine of Merseyway, just off Prince's Street. Surrounded by shops and ongoing developments, the square expects high foot traffic upon completion.

The vision for Silk Square is to create a friendly and welcoming urban pocket that accommodates the community and adds vibrancy to the existing environment. This project aims to transform the area into an inviting space that enhances the urban landscape and supports the needs of residents and visitors alike.

Visiting The Site

The team kickstarted the project with an introductory meeting for all members regarding a preliminary understanding of the site. This productive session established the overall design direction and intentions and set expectations for the site's conditions.

On May 9, 2024, the team visited the site and met with site manager Ognyan Vasilev to gain a deeper understanding of Silk Square. This visit allowed the team to comprehend the site's complex needs and provided an opportunity to ask pertinent questions.



Site analysis diagram



Site visit - Merseyway



Site visit - Silk Square

Dual Approach to Urban Design: Permanent and Temporary Solutions

The design process commenced by dividing the group into two teams, each investigating permanent and temporary urban solutions.

The temporary solution adopts a modular, improvisational intervention approach, prioritising swift and straightforward assembly to address the immediate community's needs.

Conversely, the permanent team approaches the site strategy as a landscape proposal, aiming to cultivate a lively community space and introduce a revitalising green enclave within Merseyway.

By presenting these two distinct proposals, the teams endeavour to realise the collaborator's vision for unlocking the full potential of Silk Square.

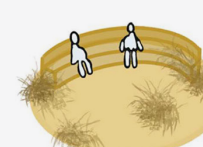
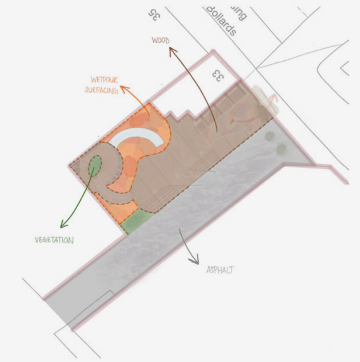
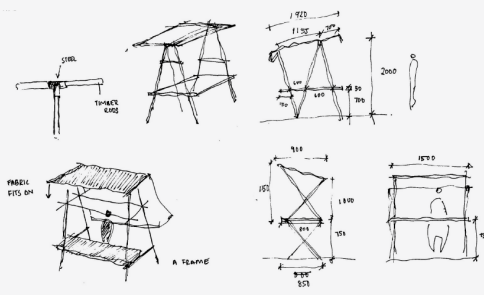
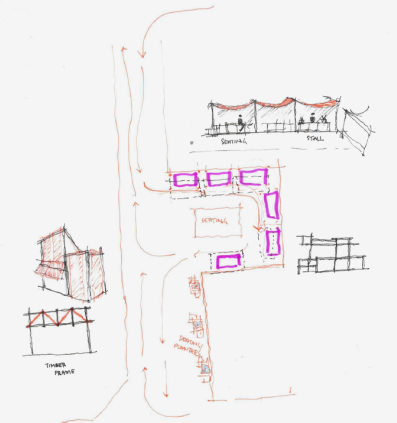
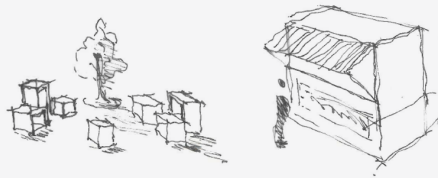
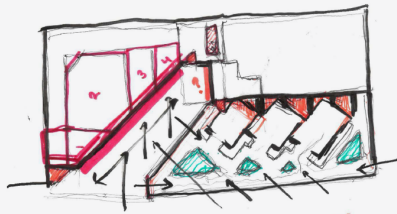
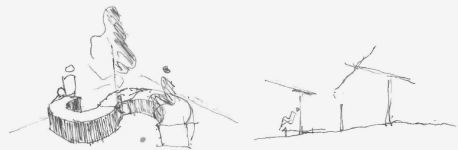
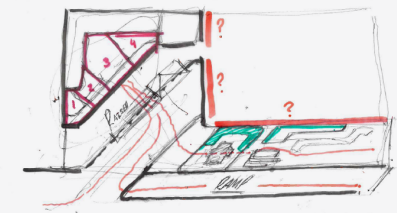
Permanent Team Leaders

1. Diyanah Baharuddin
2. Jing Yang
3. Matthew Hutchinson

Temporary Team Leaders

1. Keng Chi Mak
2. Tze Chean Chong





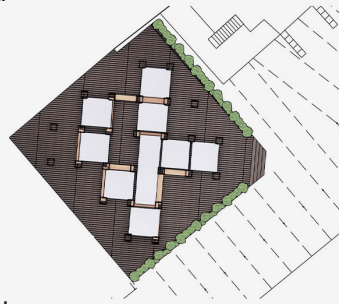
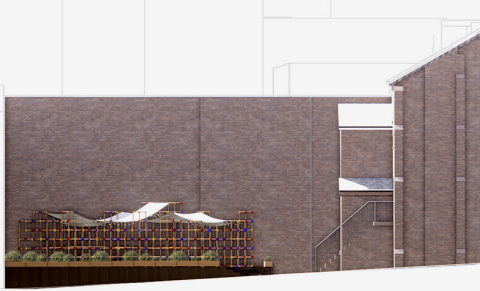
Temporary Design Development

Our design process began with using modular elements to envision spaces that could transform and adapt using a linear grid with slots and interlocking components at various levels. Initially, we considered positioning the shops along existing walls, but this felt too isolated. We then shifted to a perpendicular grid, where angular storefronts guide people into the space, integrating more seamlessly with decking layouts. To address the exposed framework, we added shade and fabric pergolas to create a more private and sheltered feel and incorporated shrubbery to enhance the spatial qualities.

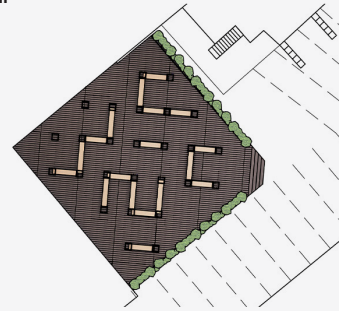
Permanent Design Development

The permanent design focuses on three main ideas: colours, playground, and safety. Initially, we explored ways for users to engage with the pocket area by incorporating different levels, seating, and playground facilities for children, creating an open space for everyone. We prioritised using durable and sustainable materials sourced locally, including recycled glass shelter not only creates playful coloured shadows but also offers rain protection. Additionally, we kept the main route access open to meet fire escape regulations.

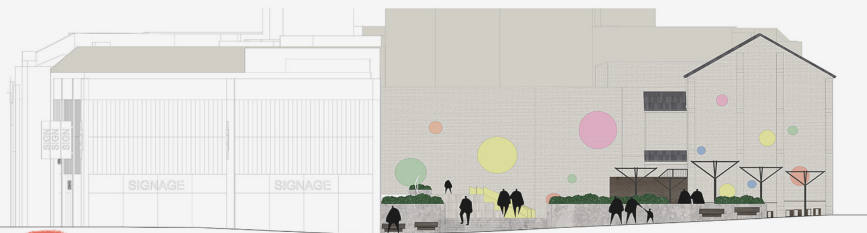
1. Temporary - Weekend proposal



2. Temporary - Weekday Proposal



3. Permanent - Landscape Proposal



Final Proposal - Temporary Solution

Our proposal promotes conversation and socialising through a modular, lightweight installation offering flexible space functionality. We aim to bring vibrancy with murals, coloured canopies, and planters. During weekdays, the space can be used as a place of refuge with benches, while on weekends, it transforms into a market showcasing Stockport's rich culture, craft, and food. Ultimately, our "in-between" space bridges the gap between Prince's Street and Merseyway, creating an inviting and welcoming environment for the people of Stockport.

Final Proposal - Permanent Solution

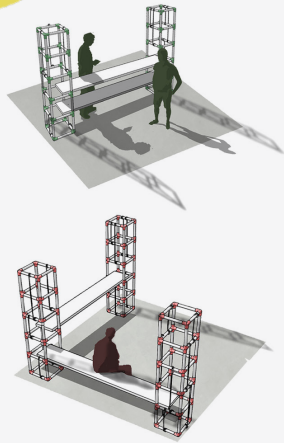
Our design focuses on creating a lively, social space centred around a playground for children. Vibrant materials and colours, along with a mural celebrating the site's character, are used to attract pedestrians. Inspired by Stockport's murals, we'll use recycled plastic for a stained glass effect on our shelter, addressing aesthetics, weather protection, and local context. Safety is paramount, with an open layout and monitored design complemented by strategic lighting to prevent vandalism. Accessibility is ensured through ramps and stairs. Ultimately, our design aims to engage a broader audience and become a centrepiece in Stockport.

Reflection

Throughout the two weeks of MSA Live, we discovered the true power of teamwork. Organising the action plan, coordinating collaborators, conducting site visits, and presenting to clients required extensive coordination and communication. Each step and submission depended on our collective effort. Managing a large group of students with their deadlines was challenging, but we relied on those who were present and stepped in where needed. Working with first and second year bachelor students of varying skill levels also required us to teach and explain our thought process, which, although time-consuming, was incredibly rewarding. This experience allowed us to help students grow, and in turn, we learned from their fresh perspectives. Involving them in the design process and client presentations built their confidence and enhanced their critical thinking skills. Ultimately, this journey was about mutual growth and learning, fostering a collaborative environment that will benefit all of us in future projects.

Diagrams - Temporary Solution

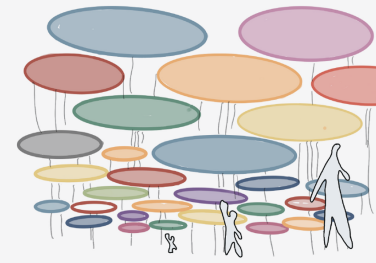
Diagrams - Permanent Solution



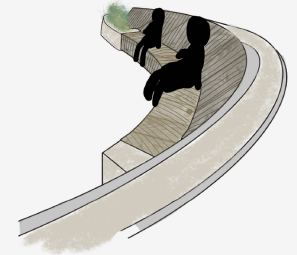
Modular Set-up



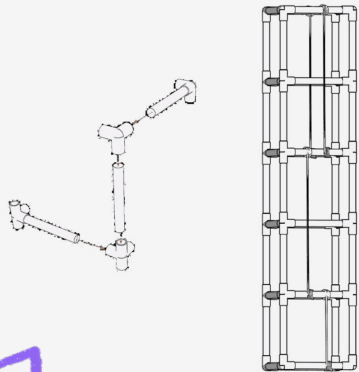
Buttress Art



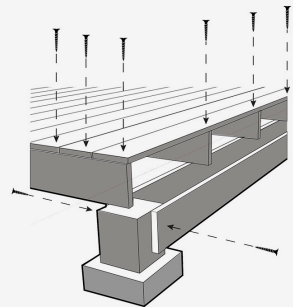
Colourful Canopies



Sitting Layout



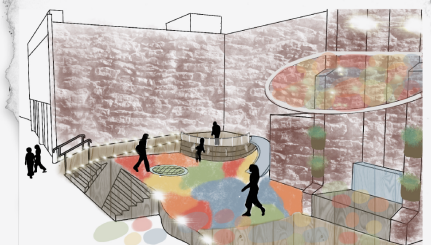
Module Construction



Decking Construction



Pedestrian Experience



Lively Space

Temporary Solution - Weekday



During weekdays, the modules function as benches, providing a quiet spot for people to relax and take a break from the busy high street.

Temporary Solution - Weekend



Extra modules, canopies, and decorations will be set up on weekends for a market, boosting community and business engagement.

Permanent Solution - Overview



The treated landscape levelling and coloured shelters create a welcoming atmosphere and promote accessibility for everyone.

Permanent Solution - Playground



The colourful playground is a family-friendly space where children can play safely on the provided wetpour flooring.



Client Presentation

Through the MSA Live project, team members learned valuable presentations skills and gained experienced by communicating efficiently and clearly with our collaborators. The insightful presentation sessions allowed team members to receive constructive feedback from our collaborators to improve on our design and presentation skills in the future!

Portfolio Sharing

The sharing session took two approaches: one highlighting the meticulous requirements for master planning, including regulations, cost management, energy calculations, and practical design approaches; the other exploring creative, futuristic interactions between people, humanity, and waste. The portfolios featured a diverse range of skills, including oil pastel drawings, renderings, and model making. These presentations provided valuable insights into the standards and content expected in future academic endeavours.

Planting Proposal

All plants proposed suitable for a shaded environment.



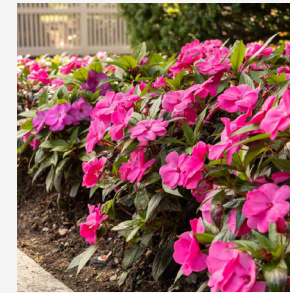
Wax Begonia



Astilbe



Fuschia



New Guinea Impatiens



Toad Lily



Bleeding Heart

Cost Estimate

Temporary

Garden Designer Fees (Design & Execution (20%))	£2,600
Garden Design Landscaping (£20,000 per 100m ²)	£5,000
Garden Design (Labour & Materials) (£100 per m ²)	£2,000
Earthwork for Slope	£6,000
OVERALL	£15,600
Contingency (30%)	£4,680
TOTAL COST	£20,280 (£25,000)

Permanent

Garden Designer Fees (Design & Execution (20%))	£19,200
Garden Design Landscaping (£20,000 per 100m ²)	£60,000
<i>Elements for Garden Design Landscaping:</i>	
Wall Paint / Spray Paint (£10 per m ²)	£300
Timber Flooring	£25,000
Wetpour Flooring	£6,000
Landscaping	£3,750
Timber Seating	£4,000
Sliding	£2,000
Decking	£14,000
Trampoline	£1,000
Colour Transparent Canopy	£4,000
Garden Design (Labour & Materials) (£100 per m ²)	£30,000
Earthwork for Slope	£6,000
OVERALL	£115,200
Contingency (30%)	£34,560
TOTAL COST	£149,760 (£150,000)

* Cost Estimate Calculation is based on Checktrade for guideline only. Excluding other services, inflation and material transport.

* Cost Estimate Calculation is based on Checktrade for guideline only. Excluding other services, inflation and material transport.

ABOUT

Each year the MSA LIVE programme unites Masters Architecture year 1 and Masters of Architecture & Adaptive Reuse students with those in BA foundation, year 1 and year 2 and Masters Landscape Architecture 1 in mixed-year teams to undertake live projects with external partners to create social impact.

LIVE PROJECTS

All MSA LIVE projects are live. A live project is where an educational organisation and an external partner develop a brief, timescale, and outcome for their mutual benefit.

SOCIAL IMPACT

All MSA LIVE projects are for community benefit or have social impact. Social impact is the effect an organization's actions have on the well-being of a community. Our agendas are set by our external collaborators.

EXTERNAL PARTNERS

MSA LIVE projects work with many organisations: charities, community groups, social enterprises, community interest companies, researchers, practitioners and educators.

STUDENT-LED

Our MSA masters students take the lead in the project conception, brief development, delivery and co-ordination of a small project. Other cohorts joined for an eventful 2 weeks of activities at the end of the academic year.

KNOWLEDGE TRANSFER

Working in teams within and across year groups and courses; MSA students participate in peer to peer learning. In addition, collaborators, participants and students engage in the transfer of tangible and intellectual property, expertise, learning and skills.

LARGE SCALE

This year approximately 600 students from 6 cohorts in MSA have worked on 40 projects with partners.

QUESTIONS

For questions about MSA LIVE please contact the MSA LIVE team: msalive@mmu.ac.uk

BLOG

live.msa.ac.uk/2024

SOCIAL

#MSALive24

@msa.live.24

@TheMSArch

@MLA_TheMSArch

WEBSITE

www.msa.ac.uk