

**MANCHESTER SCHOOL
OF ARCHITECTURE**

Elev8Stockport

Group 27



Visit msa.ac.uk for more information



**MSA
LIVE 24**

Team

Osian Roberts (MArch1)

Yi Ping Kam (MArch1)

Yunshen Zhang (MArch1)

Yara Sneij (MA AR)

Emir Hasanagovski (BA1)

Juliette Ruelland-Kennedy (BA1)

Lorcan Pinder (BA1)

Sonia Marie Alfred (BA1)

Xingjian Zhang (BA1)

Elliot Summons (BA2)

Fatmah Sulaiman A Alkahlan (BA2)

Finbar Smith (BA2)

Grace Walker (BA2)

Hoi Lo (BA2)

Xinyi Li (BA2)

Partners

Elev8 Stockport is a student led project that is in collaboration with the Stockport Mayoral Development Corporation. The project focuses on three sites within the Stockport8 development to propose a meanwhile use within them before the development gets underway.

The Stockport Mayoral Development Corporation is described as an "innovative partnership that sets a new benchmark for town centre regeneration. It brings together powers devolved to the Greater Manchester Mayor, Andy Burnham, combined with strong local leadership from Stockport Council and the long-term commitment of the government's housing agency, Homes England, to deliver an ambitious vision for the future of Stockport town centre". Stockport MDC's guiding principles are community, sustainability, and innovation. The Stockport MDC is spearheaded by Interim chair Eamonn Boyle. The primary figures from the MDC collaborating with us on the project is development manager Laura Green and, graduate management officer Leighanna O'Farrell.

Introduction

ELEV8STOCKPORT

"Elev8Stockport" embarks on the transformation of three vacant sites in Stockport, contributing to the dynamic regeneration of the city over a 3–10-year period. The project will focus on creating temporary, meanwhile uses for the sites, blending sustainability, creativity, and community engagement. From a Grade II listed Railway Viaduct to a two-story office block and a vacant warehouse our diverse sites offer a spectrum of design possibilities and by animating these spaces, we aim to make them accessible to the public and local businesses, aligning with council objectives on health, wellbeing, and climate action. This initiative not only addresses the immediate needs of the community but also contributes to the long-term vision for Stockport's evolution. The proposed deliverables include a comprehensive physical model showcasing the urban landscape and the proximity of all three sites, alongside detailed renders for each individual location. Throughout the process, skills such as innovative design thinking, community collaboration, and sustainable urban planning will be cultivated, fostering a collaborative and forward-thinking approach to city development.

In Week 1, we introduced the project, outlined the action plan, and divided the team into three smaller groups led by Master's students. Each group worked on proposals for three large sites, creating digital renders and sketches.

In Week 2, we focused on model making and collaborated to refine our proposals based on feedback. (Details on MSALIVE 2024 Blog)

Week 1



Introduction day

01



Brainstorming session

02



Site visit

03



Digital output production day

04

Week 2



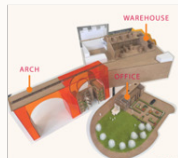
Model-making day

05



Model development day

06



Models completions day

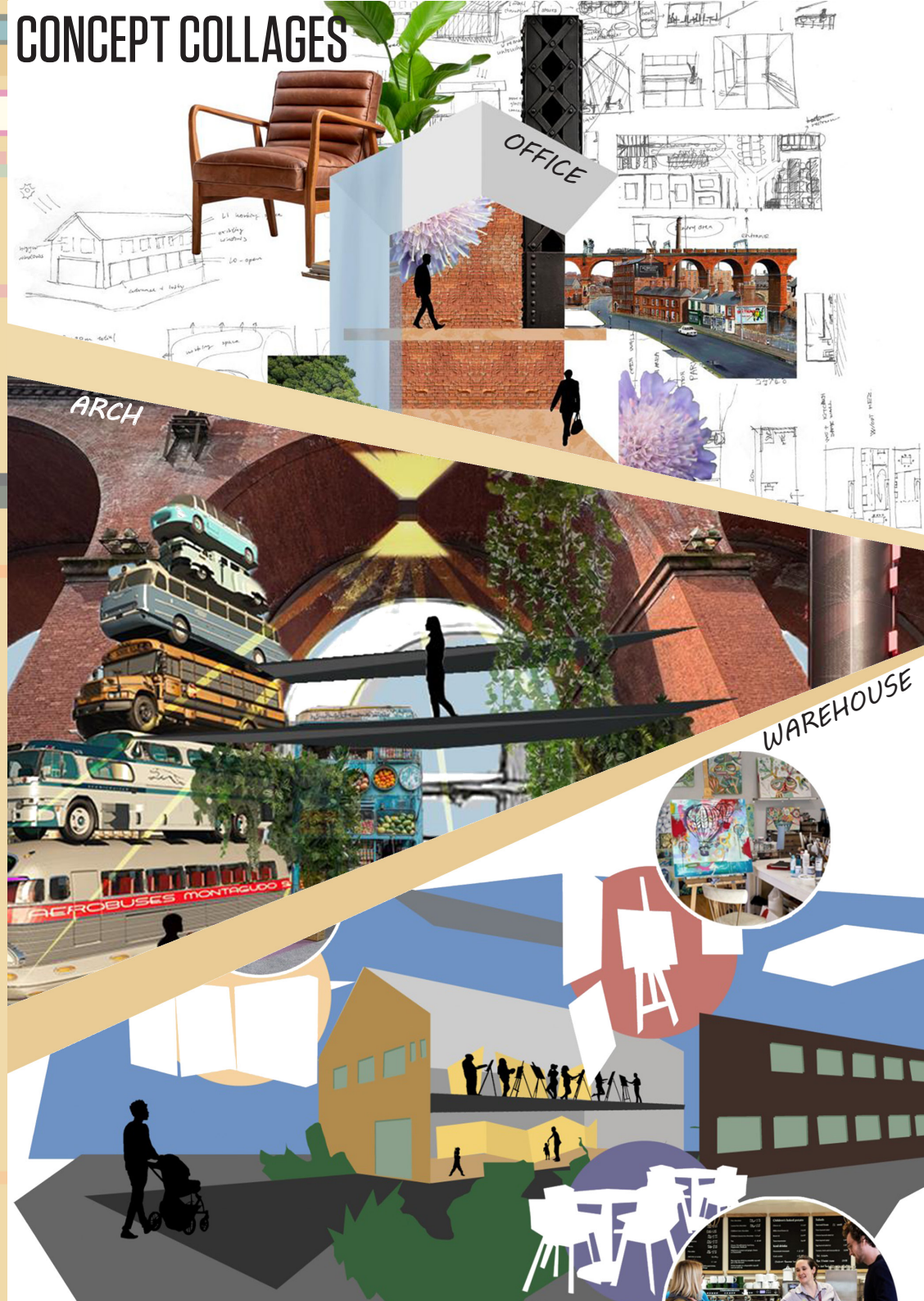
07



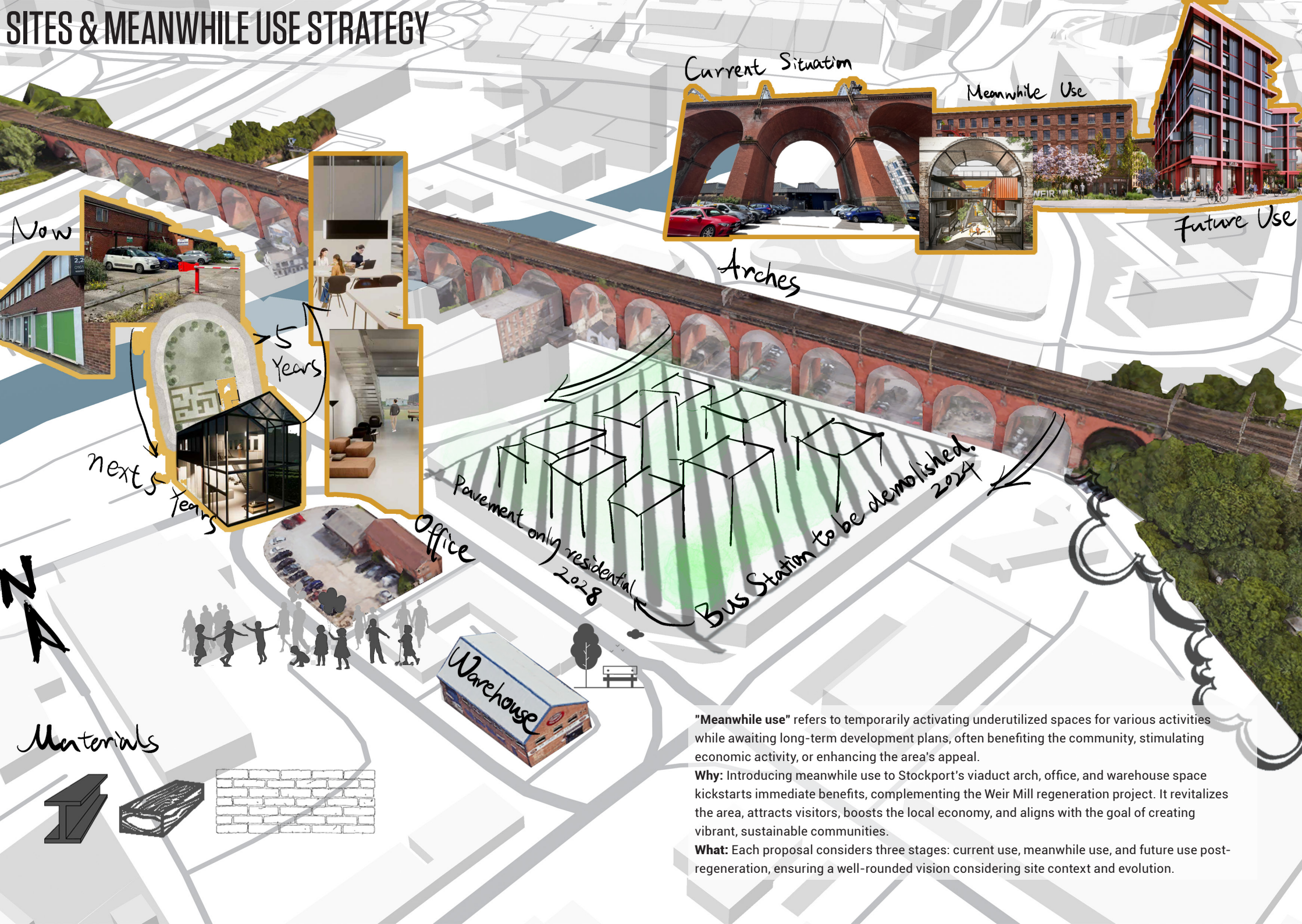
Meeting with council

08

CONCEPT COLLAGES



SITES & MEANWHILE USE STRATEGY



Current Situation

Meanwhile Use

Future Use

Arches

next 5 Years

5 Years

Office

Pavement only residential 2028

Bus Station to be demolished. 2024

Warehouse

Materials



"Meanwhile use" refers to temporarily activating underutilized spaces for various activities while awaiting long-term development plans, often benefiting the community, stimulating economic activity, or enhancing the area's appeal.

Why: Introducing meanwhile use to Stockport's viaduct arch, office, and warehouse space kickstarts immediate benefits, complementing the Weir Mill regeneration project. It revitalizes the area, attracts visitors, boosts the local economy, and aligns with the goal of creating vibrant, sustainable communities.

What: Each proposal considers three stages: current use, meanwhile use, and future use post-regeneration, ensuring a well-rounded vision considering site context and evolution.

OFFICE

The concept was to renovate the office building into a Council Office x Social Education space. A work-life balance working environment that celebrate with the public.

The internal space we aim to produce will create an open working environment with ample natural light, a variety of communal workspaces and multiple private meeting rooms to provide a pleasant workplace for the council with every day-to-day spacial requirement met within the design. Natural materials, greenery, glazing and industrial steel accents will combine the contextual industrial aesthetic with classic examples of contemporary workspaces. Removing the current northern-most façade and replacing it with a fully glazed curtain wall, emulating the structure's current shape, will connect the interior with the exterior landscaping and further views towards the viaduct.



Site Plan

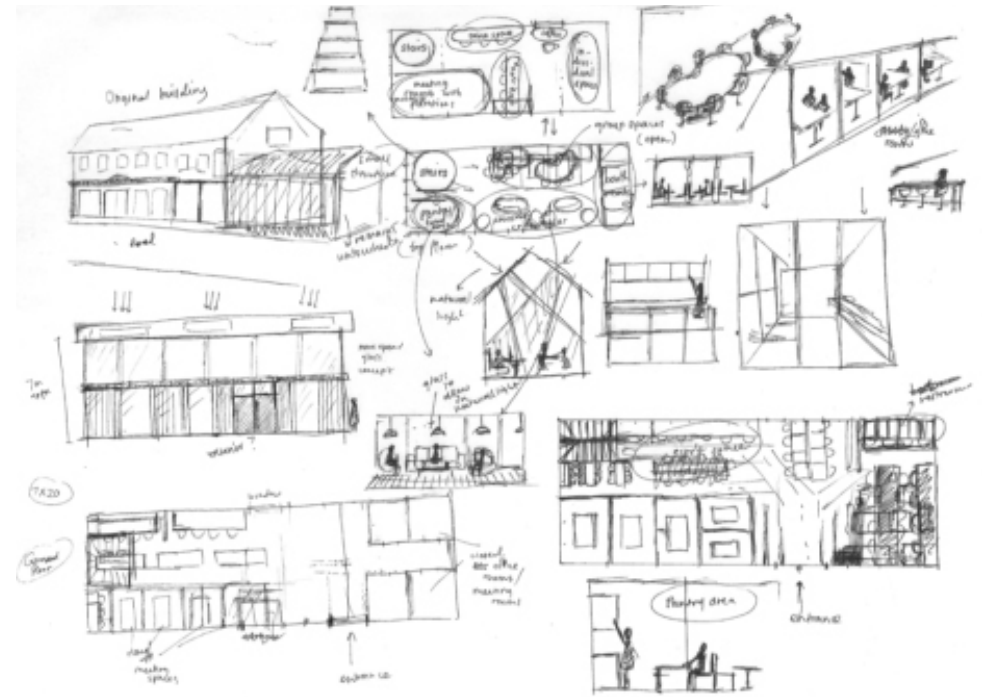


Elevation



Open work environment

Apart from the work aspect, our aim is to make it a balanced green space allowing interaction between the people and greenery around it, as seen from the lush and educational maze planters, growing local plants from the area. The flexible open space overlooked by the glazed structure features a temporary small stage and resting area, opening opportunities for hosting events and rejuvenation for staff and visitors. The building and its outer green space together work to enhance the overall working environment and landscape to promote a healthier work-life balance in its people.



Sketches



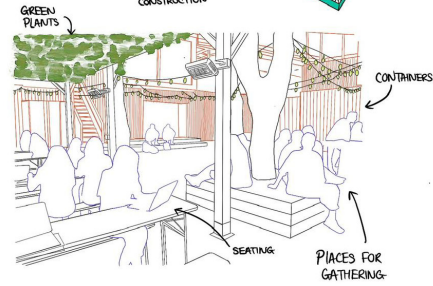
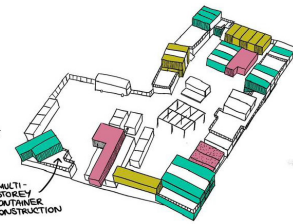
Office at night

ARCHES



HATCH, MANCHESTER

- CONTAINERS PROVIDING FOOD & RETAIL SHOPS.

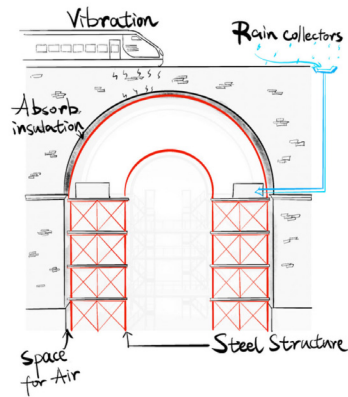
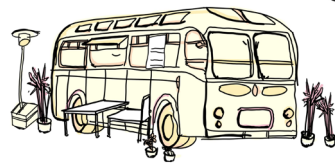


CASTLEFIELD VIADUCT

- STEEL CONSTRUCTION WITH GREEN



BUS AS CONTAINERS



During our initial site visit with the client, we found great potential under the arches, sparking creative ideas. Tasked with proposing a temporary use with permanent possibilities, we drew inspiration from successful examples like Manchester's Hatch, envisioning retired buses strategically arranged for both visual impact and functionality. This choice stemmed from analyzing the site, considering the imminent demolition of a nearby bus station and the city council's directive to maintain the industrial feel. Our proposal, praised by the MDC Stockport council, integrates modular structures made from repurposed buses, offering a unique focal point while honoring the city's industrial heritage in a sustainable and inclusive manner.



Render of Space inside bus container



Render of Space under Arch

WAREHOUSE

This element of the project lies within the abandoned 'Garage Door Company' warehouse on Kingston Street. Two concepts underpin this design. The first, reflected on the ground floor of the building is a family space. This idea was inspired by the nearby location of a nursery on Bloom Street and the number of residential buildings close to the site. What we realised is that there weren't many other offerings for families apart from this nursery. So to increase the attraction this side of Stockport has to young families we designed a children's play area/arts and crafts area within our scheme. We also included a cafe on the ground floor as a space for the parents to relax and socialise.

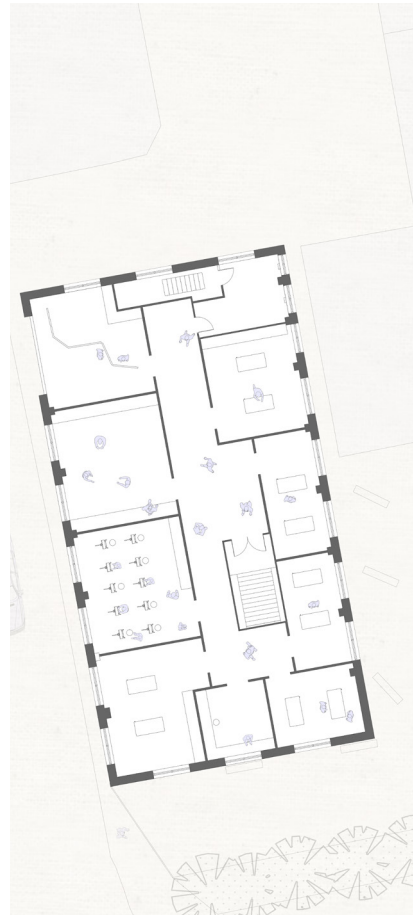
The second underlying concept of the design was to bring economy activity and creativity to the area. We propose this by providing rentable studio spaces on the first floor. The studios are designed in a way where they don't have a set function, that would be up to the occupier to decide which opens up the space to a wide range of creatives and individuals looking for an affordable space to work. The materiality of the first floor would be simplistic, this is advantageous both in its affordability and its malleability. It will allow for panels to be knocked through and divided with ease allowing the form to follow the function.



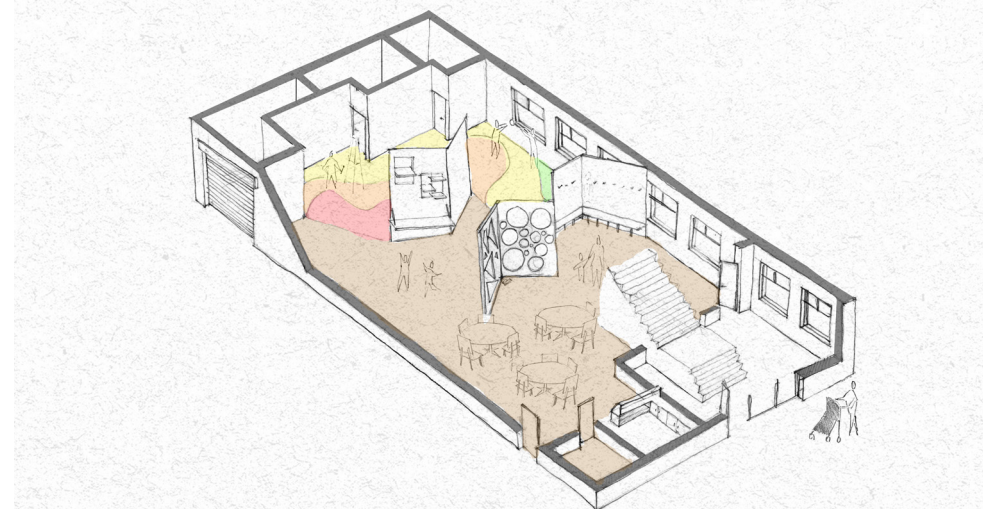
Render of External Space Using Old Shutter Housing as Planters



Ground Floor Plan



First Floor Plan

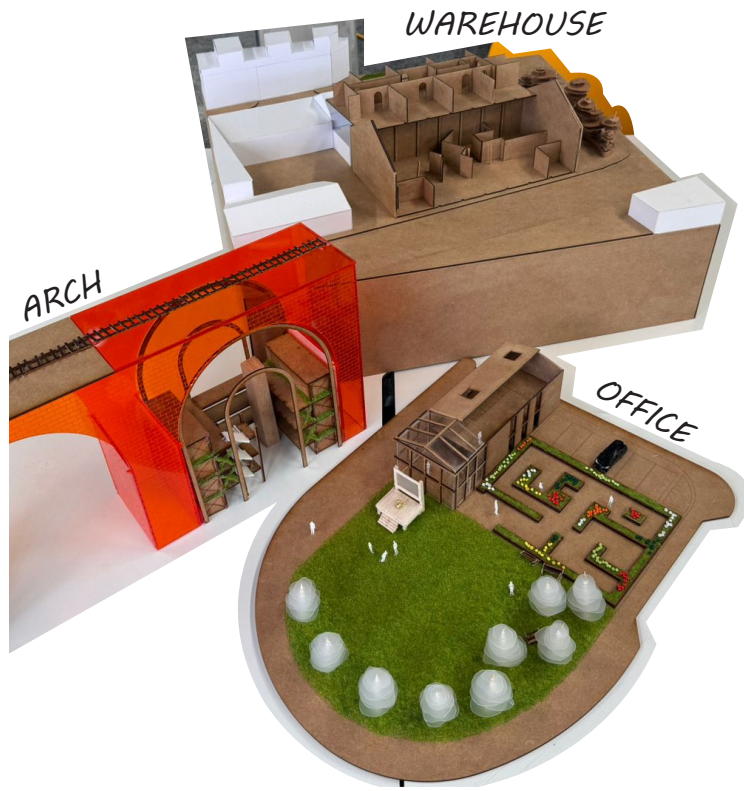


Sketch Axonometric of the Ground Floor



Render of Art Studio

MODELS & COLLABRATE



The three models represent the diverse sites, with each group using different materials to bring their vision to life.



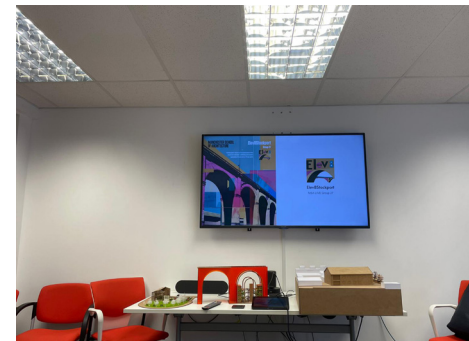
During the model making process, Gemma Potter, who helping to coordinate the university-wide Arts Council Cultural Development funded project Stockport Creative Campus, came to looking at how creative activity can make Stockport a better place to live and work and thus visit us.

MEET UP & PRESENTATION



Our presentation to the Stockport Council was a huge success. They noted the alignment of our proposals with Stockport's future vision and appreciated the thorough analysis of our models, noting their practicality. Specifically, they found our ideas for the warehouse to be an ideal interim solution until its demolition.

The discussion on the steel structure under the arch was equally compelling, with our explanation of its feasibility and minimal impact impressing them. They were particularly intrigued by the concept of a new glass and steel office space. Additionally, their feedback on the gardens prompted us to consider enhancing safety features for the project's overall appeal and functionality.



ABOUT

Each year the MSA LIVE programme unites Masters Architecture year 1 and Masters of Architecture & Adaptive Resuse students with those in BA foundation, year 1 and year 2 and Masters Landscape Architecture 1 in mixed-year teams to undertake live projects with external partners to create social impact.

LIVE PROJECTS

All MSA LIVE projects are live. A live project is where an educational organisation and an external partner develop a brief, timescale, and outcome for their mutual benefit.

SOCIAL IMPACT

All MSA LIVE projects are for community benefit or have social impact. Social impact is the effect an organization's actions have on the well-being of a community. Our agendas are set by our external collaborators.

EXTERNAL PARTNERS

MSA LIVE projects work with many organisations: charities, community groups, social enterprises, community interest companies, researchers, practitioners and educators.

STUDENT-LED

Our MSA masters students take the lead in the project conception, brief development, delivery and co-ordination of a small project. Other cohorts joined for an eventful 2 weeks of activities at the end of the academic year.

KNOWLEDGE TRANSFER

Working in teams within and across year groups and courses; MSA students participate in peer to peer learning. In addition, collaborators, participants and students engage in the transfer of tangible and intellectual property, expertise, learning and skills.

LARGE SCALE

This year approximately 600 students from 6 cohorts in MSA have worked on 40 projects with partners.

QUESTIONS

For questions about MSA LIVE please contact the MSA LIVE team:

msalive@mmu.ac.uk

BLOG

live.msa.ac.uk/2024

SOCIAL

#MSALive24

@msa.live.24

@TheMSArch

@MLA_TheMSArch

WEBSITE

www.msa.ac.uk